

AVL TIMES



ASIA & MIDDLE EAST | No.151 | JANUARY 2024

WWW.AVLTIMES.COM

Novatech Powers Now Or Never Festival

HDC LED Display Asia Defying the Challenges
INFILED Launches CBSF Technology for xR/VP market
Vision Without Limits: Experience YES TECH New Products
Martin Professional MAC One BeamWash with Fresnel Lens
NEXO ePS Series Outdoor Loudspeakers



ROBE



SEE MORE

iFORTE®

OUR RELIABILITY™
IN ALL WEATHERS

TRANSFERABLE ENGINE



SCREEN MEETS INFINITE IMAGINATION



Mview Series

Outdoor Fixed Installation

Pixel Pitch: 3.3/6.67/8/10mm
Cabinet Size: 960*960

-  Lightweight & Thin
-  Superior Energy-Saving
-  Up to 10000 Level Brightness
-  Fast & Easy Maintenance



MG9 Series

Sports Events LED Solution

-  Universal for Indoor and Outdoor Sports Events
-  Higher LED Thrust for Lower Damage
-  Stronger Loading Capacity for Safety Floor

杭州第19届亚洲运动会

THE 19TH ASIAN GAMES HANG ZHOU





WILDSUN K9 WASH

the wild side of the sun

The sun is a star that fascinates and inspires us. It sets our rhythm... brightens our life and highlights our most memorable moments.

Ayrton's new wash luminaire is a powerhouse that reproduces colour perfectly. It renders the colour and grain of skin impeccably, as well as the textures and surfaces of materials...

WILDSUN K9 WASH offers the highest efficiency and weight-to-power ratio on the market. A powerful and robust luminaire that is remarkably convenient to use. The ideal fixture for major events and shows, TV studios, concert halls, and arenas.

9 Series - Source
217 mono-chip LED

Lumens
63,000

Zoom aperture
10° to 60°

Frontal Lens
217 Silicone lenses

IP Rating
IP20

Weight
26.9 kg



www.ayrton.eu



AYRTON



TRANSPARENT SERIES

Technology lights up the city

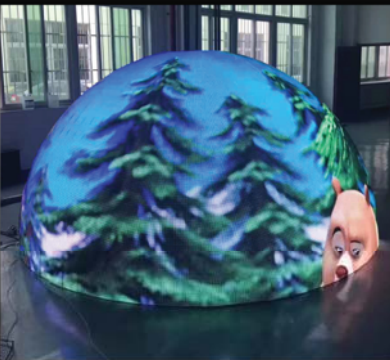
OUR OTHER AVAILABLE PRODUCTS



CHIP-ON-BOARD



SURFACE-MOUNTED DEVICE



CUSTOMISED DESIGN



OUTDOOR

CONTACT US FOR ANY ENQUIRIES!

+6597621132

marketing.sg@hg-hdc.com

3 Ang Mo Kio Street 62, LINK@AMK,
#06-25/26 Singapore 569139



INTRODUCING
MAC ONE

THE POWER OF ONE(s)



COMPACT & LIGHTWEIGHT
Easy to move and install



NARROW FAST BEAM
Very impressive and snappy beams



BEAUTIFUL BACKLIGHT
Unique eye-candy looks from Fresnel Lens and backlight effect



FRESNEL WASH
Compact wash light that fits everywhere



SCALABLE
Easy to deploy in large quantities using smart rigging accessories



Martin

INFILED

Screen your dreams

AP SERIES, ULTRA-LIGHT WEIGHT LED DISPLAY SOLUTION



Energy-saving



Quick installation



Light weight



Indoor/Outdoor

Industrial design, great both in shape and texture;

Quick installation with patented quick-lock system;

Curved surface adjustment supported with 9 adjustable angles;

Easy maintenance, wide viewing angles and excellent display quality.

China's largest pro AV and entertainment trade fair

prolight+sound
GUANGZHOU

Click for free registration!

www.prolightsound-guangzhou.com

✉ plsgz@hongkong.messefrankfurt.com

📘 📷 [prolightandsoundchina](#) 🔍

23 – 26.5.2024

Areas A & B, China Import &
Export Fair Complex

 **190,000**
sqm

 **2,000+**
exhibitors & brands

 **100,000+**
visitors

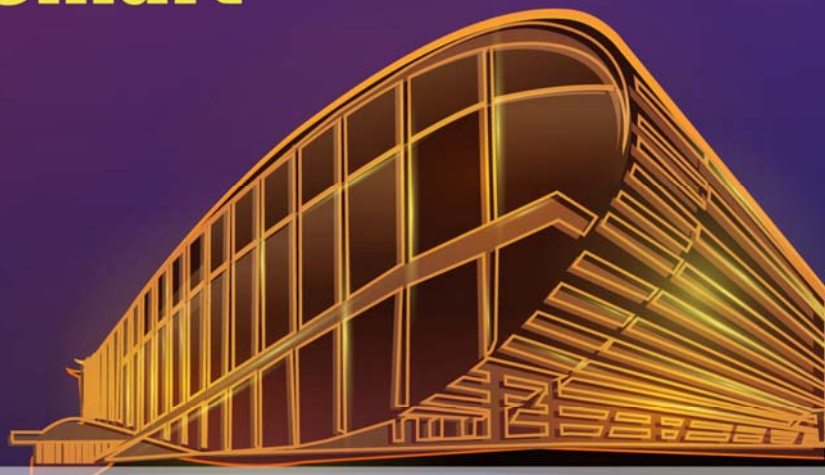
GET Show March 3 - 6, 2024

GUANGZHOU ENTERTAINMENT TECHNOLOGY SHOW

New Start, GET Smart

Canton Fair Complex

Zone D



For more please click:
<http://www.getshow.com.cn/site-admin2>

FOCUSED SOUND. EVERYWHERE.



Pseries **ID** INSPACE DEFINITION **STM** Scale Through Modularity

Characterised by high output, precision directivity and a compact, unobtrusive form factor, NEXO loudspeaker systems excel in a range of applications. Installers and services providers enjoy plug and play amplification and processing solutions, intuitive system design software and world-class support from a highly-experienced engineering team. Find out more at nexo.sa.com



Thinking. Inside the box.

NEXO
A
Yamaha
Group
Company

The AVL Team



Clarence Anthony
Global Head of Marketing
Managing Editor
Clarence@caeditorial.com



Aleš Gřiváč
International Sales Director
CEO, AVL Network s.r.o.
Ales.grivac@gmail.com



Rachel Lê Bích Ngọc
Advertising Sales Manager
(APAC Region)
rachel.avltimes@gmail.com



Sridevan Srinivass
Editorial Consultant
(Malaysia & Brunei)
Sonicguru.avltimes@gmail.com

Accounts : Juliana Iskander
adsales@caeditorial.com

Design : C.A. Editorial Consultants

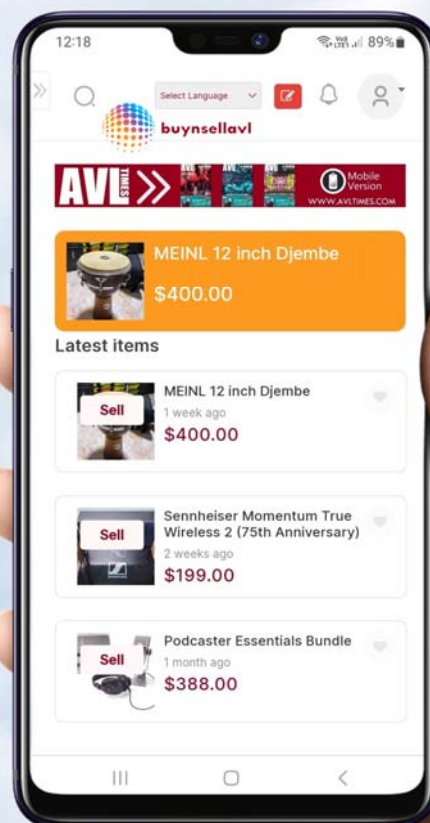
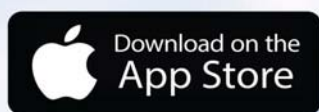
Digital Marketing : byte:ME

Publisher : C.A. Editorial Consultants

Disclaimer: All rights reserved. No part of this magazine or content may be reproduced or used without the written permission of the publisher: C.A. Editorial Consultants. All information contained in this magazine is for information only, and is, as far as we are aware, correct at the time of going to press. The views, ideas, comments, and opinions expressed in this publication are solely of the writers, interviewees, press agencies, and manufacturers and do not represent the views of the editor or the publisher. Whilst every care is taken to ensure the accuracy and honesty in both editorial and advertising content at press time, the publisher will not be liable for any inaccuracies or losses incurred. Readers are advised to contact manufacturers and retailers directly with regard to the price of products/services referred to in this magazine. If you submit material to us, you automatically grant C.A. Editorial Consultants a license to publish your submission in whole or in part in all editions of the magazine, including licensed editions worldwide and in any physical or digital format throughout the world.



Got the **AVL** App? Now available on your favourite device





Defying the Challenges: A tailored LED Christmas Tree from HDC LED Display Asia

As the world gradually emerges from the shadows of the pandemic, Singapore stands at the forefront, ready to welcome the return of international tourists in 2023 with the Lion City gearing up for a tourism revival like never before. In the same year, HDC officially announced its expansion into Singapore as a regional arm of Hong Guang Display Corporation. Remarkably, within a mere two months of this joint venture, the company received an inquiry to construct a 12.6m tall LED structure for a festive feature in the southern island of Singapore.

The client, located in Sentosa, presented HDC with a set of requirements that proved to be both technically and time challenging.

The primary challenge was to design and build a LED structure resembling a Christmas tree, measuring 5.8m (L), 5.8m (B), 12.6m (H) with supporting framework to withstand a structural load of 8.5 tonnes. Adding to the complexity, the tree had to endure outdoor weather conditions, particularly the uncertainties of the December climate and built using non-standard LED modules meaning the 60 days also included production of triangulation shaped modules.

Despite encountering distinctive challenges, HDC persevered and met the tight deadline, delivering the project under extremely tight dateline. Nearly a month was dedicated to engineering simulations, electrical reviews, video signals and power distribution mapping of the LED tree. The inclement weather and wind factors were also another critical subject topic for an island installation. Safety considerations were paramount, especially since this LED tree was destined for a public environment, adding an extra layer of stress to the team responsible

for designing and implementing the LED Christmas tree.

In a span of 60 days, navigating through time constraints and various challenges, HDC successfully presented a Christmas tree-shaped LED display that precisely adhered to the client's specifications.

This project utilizes 105 pieces of P5 LED cabinets, forming a captivating tree-like structure covering 136.4m² with 10.6 million pixels illuminating the entire display.

The intricately designed tree comprises of 9 layers with each side meticulously calculated to seamlessly fit on-site. The margin for errors was virtually non-existent, emphasizing the precision required in crafting this visually stunning LED installation. A spokesperson at HDC believes that this is a pivoting point for them with an opportunity to prove itself to the delight of the customer.

<https://en.hg-hdc.com>



An INFiLED-made practical display solution for CRRC Changchun's conference room

In November, the CRRC Changchun Railway Vehicles Co., Ltd installed a QH series screen in its conference room. The screen will be used for a bunch of critical conferences and make all the key information crystal clear to the viewers in the room with a pixel pitch of 1.56mm and a refresh rate of 3840Hz.

The CRRC Changchun Railway Vehicles Co., Ltd is one of the biggest manufacturing enterprises in China, it has produced a variety of rolling stock for customers around the world, including locomotives, multiple units, and light rail vehicles. Since it has lots of conferences to hold to deal with important projects, it decided to invest in a screen from INFiLED, whose screens were favored and used by worldwide companies, such as Shenzhen Metro Group, Die Sparkasse Bremen AG, and MGS Seguros.

This time, the QH series screen set up in the large-scale enterprise had a superior quality as screens in INFiLED other projects. In the aspect of the

color presentation, it featured a contrast ratio of 5000:1 and a greyscale of 13bit, smoothly showing lifelike colors when playing videos. Also, the screen had a brightness of 600nit after calibration and was glare-free, delivering a comfortable viewing experience for viewers.

Besides the advantages in the display performance, the screen also had a great feature of easy-to-install. Applied QH series weight only 5.6kg for each cabinet, making it easy for staff to install and move the screen. Moreover, with a total depth of only 40mm including a floating mounting bracket, this screen could be perfectly flush-mounted on the wall, giving the conference room a neat look.

About QH series

QH series digital LED display adopts an all-in-one design and has excellent display performance. With fine pixel pitch and high resolution, it can be used as an ideal visual solution for a variety of indoor application scenarios. This series completely meets the



configurations required for Full HD, 4K, and 8K displays as it features a 16:9 panel ratio and a pixel pitch range of 0.9mm to 2.5mm.

INFiLED is an international high-tech enterprise specializing in the development and manufacturing of large-scale LED screens. INFiLED's products were exported to 87 countries and applied in various fields including DOOH, live events, sports, retail, and corporate. INFiLED is striving to be the best in the LED screen industry to enlighten the world with a visual feast.

www.infiled.com

info@infiled.com



Small Cantilevered Meeting Room

MCEC Chooses AMX Varia touch panels for improved functionality and modernised user experience

HARMAN, a leading provider of audio, video, lighting, and control systems, reaffirms its ongoing collaboration with The Melbourne Convention & Exhibition Centre (MCEC) following the upgrade of MCEC's event technology infrastructure to provide an enhanced experience for both virtual and hybrid events.

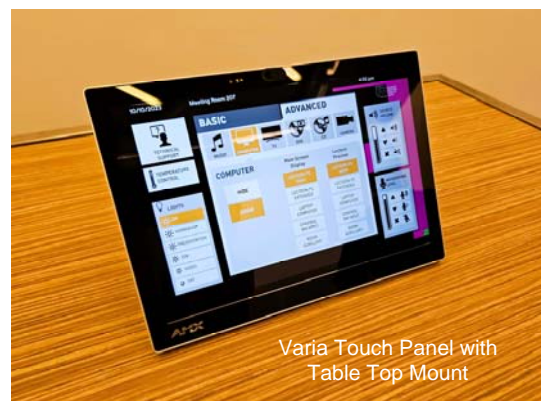
MCEC, a renowned venue situated on the picturesque edge of the Yarra River in Melbourne's CBD, has long been recognised as a premier destination for conferences, exhibitions, and conventions. To continue delivering cutting-edge facilities, MCEC embarked on a project to replace their existing fleet of MVP-9000i touch panels, which had been in service for over a decade.

Scott Reid, Senior Systems Engineer at MCEC, highlighted the necessity for the upgrade: "The MVP panels have served us well, but they were well overdue for replacement. We reached a point where we needed to find a new solution due to issues with the ageing

equipment, such as battery problems and the unavailability of replacement batteries. With HARMAN's Varia solution, we were able to not only address these challenges but also future-proof our event technology capabilities."

After exploring several options, MCEC identified AMX Varia Touch Panels as their ideal solution, leveraging its robust performance and wireless capabilities. MCEC chose the AMX VARIA-100 Touch Panel series, accompanied by the AMX VARIA-ACS-100F Tabletop Stands, as the core components of their upgraded system. These state-of-the-art touch panels provide an intuitive user interface and exceptional performance, according to MCEC's requirements for seamless event control and management.

Graham Barrett from HARMAN also discussed the seamless transition from the previous touch panels to the Varia solution: "There is a strategic partnership between MCEC, AMX and



Varia Touch Panel with Table Top Mount

HARMAN which we established some time ago. One of the benefits was to be able to get Varia panels in the client's hands very early with the pre-release product models to prove out the functionality as well as the mechanics of how they can deliver that upgrade."

"Customers like MCEC have had a significant input about the required functionality of many AMX products over the years and Varia is the result of the feedback gathered on previous models. That's all part of the partnership that we've had in place for many years," he added.

Main Foyer
Stewart Donn

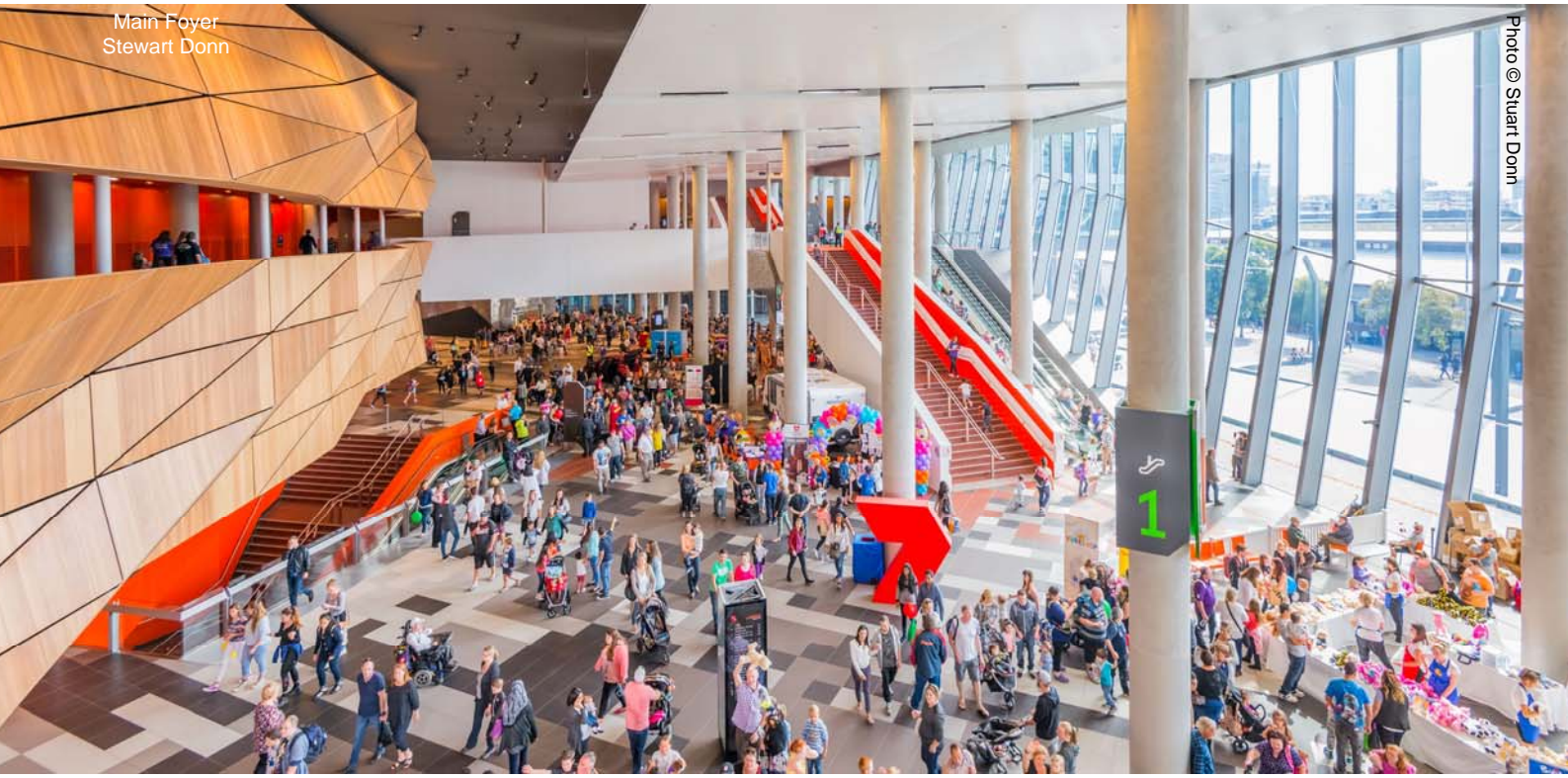


Photo © Stuart Donn

Varia Touch Panel
in Lectern



Varia Touch Panel
in Lectern Side View

The AMX Varia touch panels, with their enhanced screen real estate and advanced features, provide MCEC with improved functionality and a modernised user experience. Additionally, the panels' light-sensing feature and ergonomic design contribute to their suitability for MCEC's diverse event requirements.

Scott Reid from MCEC spearheaded the project, ensuring a smooth transition and integration of the new HARMAN solutions. The MCEC team were responsible for the installation and commissioning of the touch panels, leveraging their expertise to maximise the benefits of the cutting-edge technology.

He expressed his delight with the Varia panels, stating, "The reliability and performance of AMX products are well-known. Plus, to make changes down the track, our team will be able to deploy an update or modification to the panels very quickly and easily. It is one of the big additional value propositions for Varia over and above old MVPs."

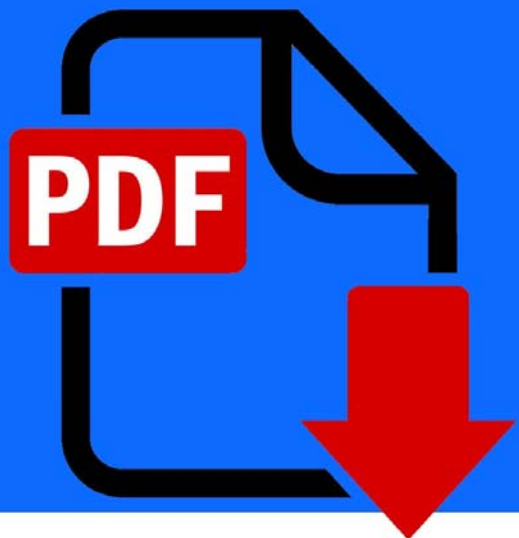
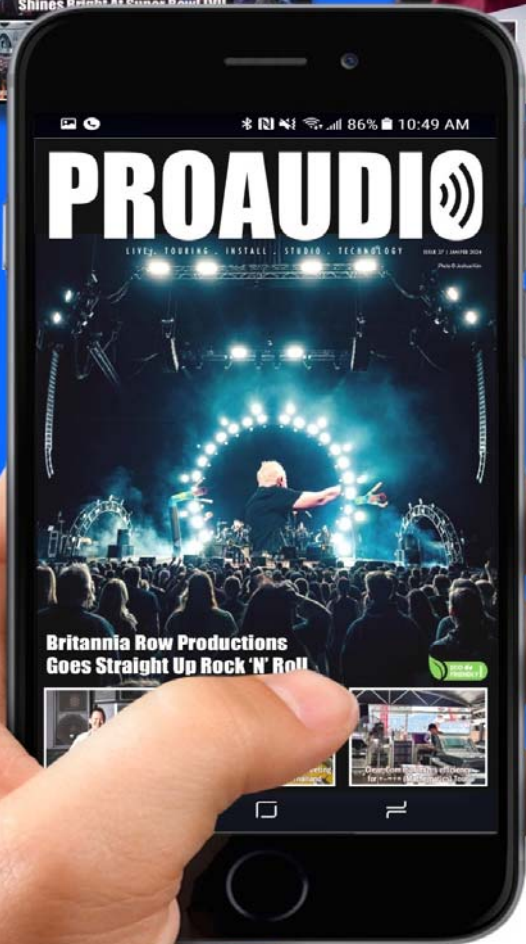
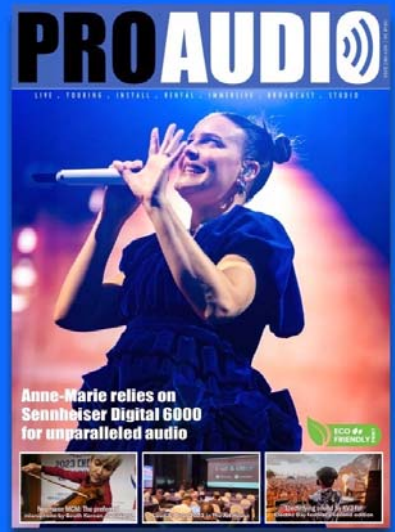
The upgraded system also seamlessly integrates with MCEC's existing AV infrastructure, which includes AMX NetLinx Controllers, AMX DGX Digital Media Switcher, BSS Soundweb London Signal Processors, and JBL Speakers.

"This successful collaboration between HARMAN and MCEC underscores our

commitment to delivering world-class event technology solutions," said Vice President and General Manager at HARMAN Professional Solutions, Asia Pacific and India, G Amar Subash. "With the Varia Touch Panels now deployed, MCEC is well-equipped to elevate the event experience, ensuring seamless control and management for organisers while providing a visually stunning interface for presenters."

<https://pro.harman.com>

PRO AUDIO NEWS YOU CAN USE



SUBSCRIBE NOW

AVLTIMES.COM

\$0.00 / FREE

Beyond lighting and sound: Largest ever Prolight + Sound Guangzhou to shine as a beacon for industry acceleration



Technological innovation and new consumption trends have taken the world by storm in recent years. Manufacturers and distributors of professional stage, lighting, and audio-visual equipment have evolved into innovative service providers offering integrated, portable, and intelligent multi-application solutions. From 23 – 26 May 2024, Prolight + Sound Guangzhou (PLSG) will return to help the global entertainment and pro AV industry capture these market transformations and opportunities. As the fair continues to grow, it is expected to drive brand value and innovation in the industry. Across 190,000 square metres of exhibition space in Areas A and B of the China Import and Export Fair Complex, 20 thematic halls will represent the largest show scale in PLSG's history.

According to market analysis, the market size for global pro AV systems is expected to reach nearly US\$ 350 billion in 2028, with Asia-Pacific being the highest and fastest-growing region. The region's pro AV market is predicted to register a CAGR of 4.2% during the forecast period (2022 – 2027). As one of the world's largest and most influential industry fairs, PLSG has always been committed to merging high quality products with innovative development to keep up with the rapid growth of the industry.

Following the record high visitor turnout at the previous edition, Ms Judy Cheung, Deputy General Manager, Messe Frankfurt (HK) Ltd, is confident that this year's show will serve as a catalyst for industry development.

“To meet market demands, the last edition was centred on six vertical sectors: entertainment, architecture, the commercial sector, culture and tourism, education, and end users. These are the user segments which continue to extend the horizon of professional lighting, audio, and visual applications,” she says. “Our ongoing efforts to optimise the fair's product categories enables it to penetrate various emerging sectors within vertical markets, further facilitating high quality industry development. With the show's scale growing, product display will be more segmented in order to meet the various needs of professional visitors from different sectors across the whole value chain.”

Optimised product categories for vertical market penetration

Under the theme of "Audiovisual +", the 2024 edition will feature five key product groups spread across 20 specialised halls to unlock the ever-growing potential of the entertainment and pro AV industry along with their respective vertical markets. Key product halls in Area A include:

Audio Brand Name

(Halls 1.2, 2.2, 3.2, 4.2, 5.2 and 3.1)

Recent developments in pro AV, Internet of Things (IoT) and cloud computing platforms have led to a wide use of related technologies in areas such as live events, security, collaboration, meetings, learning, and beyond. As part of PLSG's Audio Brand Name Halls, fairgoers will find a range of latest technologies in the Communication and Conference Halls, as well as the Multimedia Systems and Solutions Halls. These halls will feature world-class pro AV solutions and integrated experience technology, including conference systems, public broadcasting, AV network transmissions, and multimedia entertainment. Together the five halls will create synergies across a variety of vertical markets, such as entertainment, cultural tourism, performance, commercial, education, and the government sector. Additionally, the Audio Brand Name Hall (Hall 3.1) will continue to cooperate with outdoor line arrays (Halls 2.0 and 4.0). Combining “display” and “demonstration”, these areas will be an ideal interactive platform for top-quality line arrays.

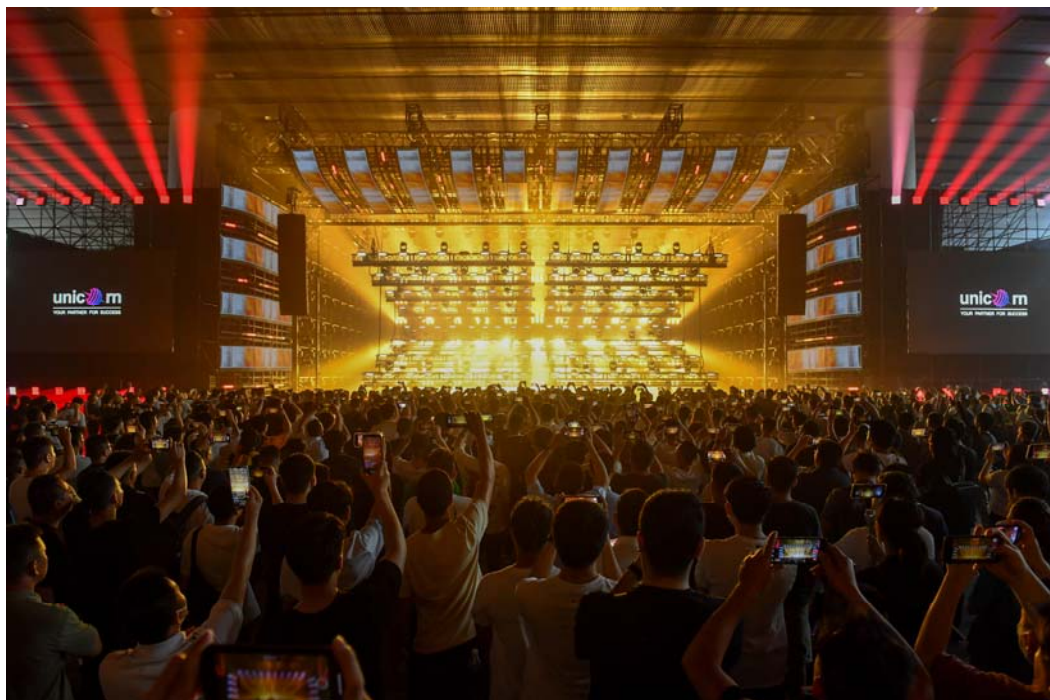
prolight+sound
GUANGZHOU

23 – 26.5.2024
Guangzhou, China

Pro Audio

(Halls 1.1, 2.1, 6.1, 7.1 and 8.1)

There has been a sharp increase in immersive experiences and scenario-based consumption worldwide, such as mini theatres, new performing arts spaces, and small-scale music venues (live houses). Cultural consumption has shifted to scenic spots, commercial districts, and cinemas as new forms of business and entertainment. With an extensive portfolio of entertainment and pro-audio products, the Pro Audio Halls not only feature professional and systematic audio equipment and amplifier systems, but also miniaturised, portable, and wireless applications to meet the diverse needs of both local and international buyers.



KTV (Halls 4.1 and 5.1)

To cater to the emerging market for home entertainment systems, personal entertainment and themed immersive entertainment, this year's fair will significantly expand the KTV Hall to some 15,000 sqm featuring AV entertainment equipment, total solutions for KTV, live broadcasting, and more.

Cultivating cultural entertainment and anchoring development

Meanwhile, Area B will gather a wide array of professional lighting and stage equipment, as well as PLSG's signature event – the PLS Unicorn Series.

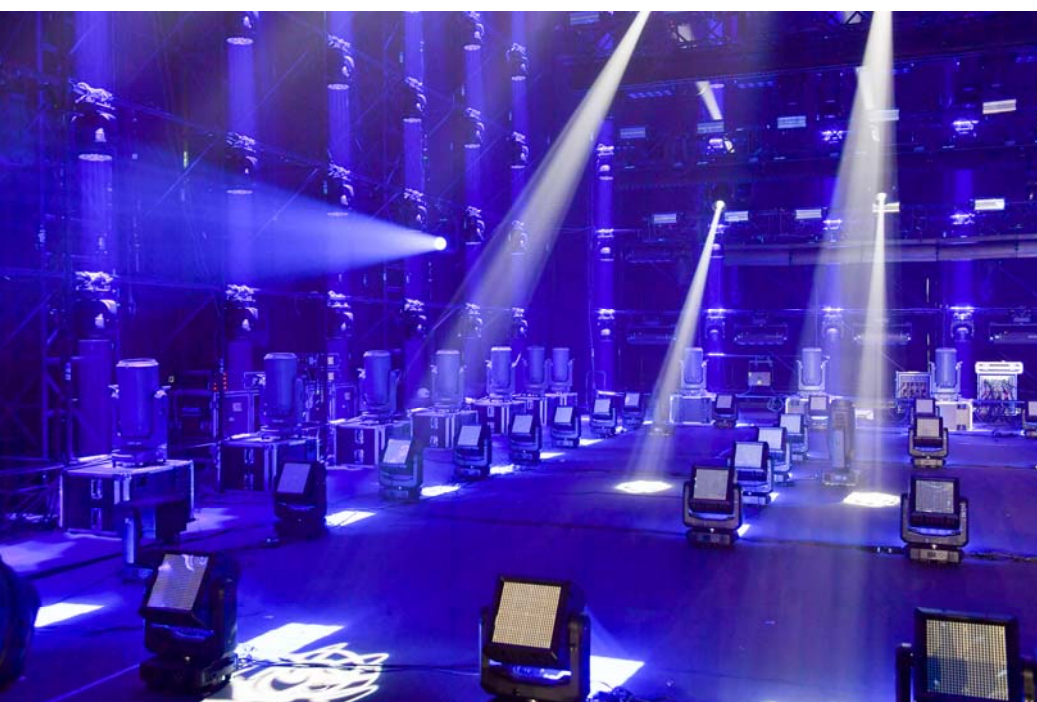
Pro Lighting (Halls 9.2, 10.2, 11.2, 13.2, 10.3 and 11.3)

Stage lighting and other equipment applications are expanding as technology continues to iterate. This expansion spans from live performances to commercial buildings, cultural and tourism venues, as well as small to medium-scale venues such as bars and restaurants. In response to positive feedback from exhibitors, the Pro Lighting Halls will reach their largest scale ever with five halls. The offering will include not only professional lighting and stage solutions, but also LED displays, projection equipment, lighting control systems, hanging

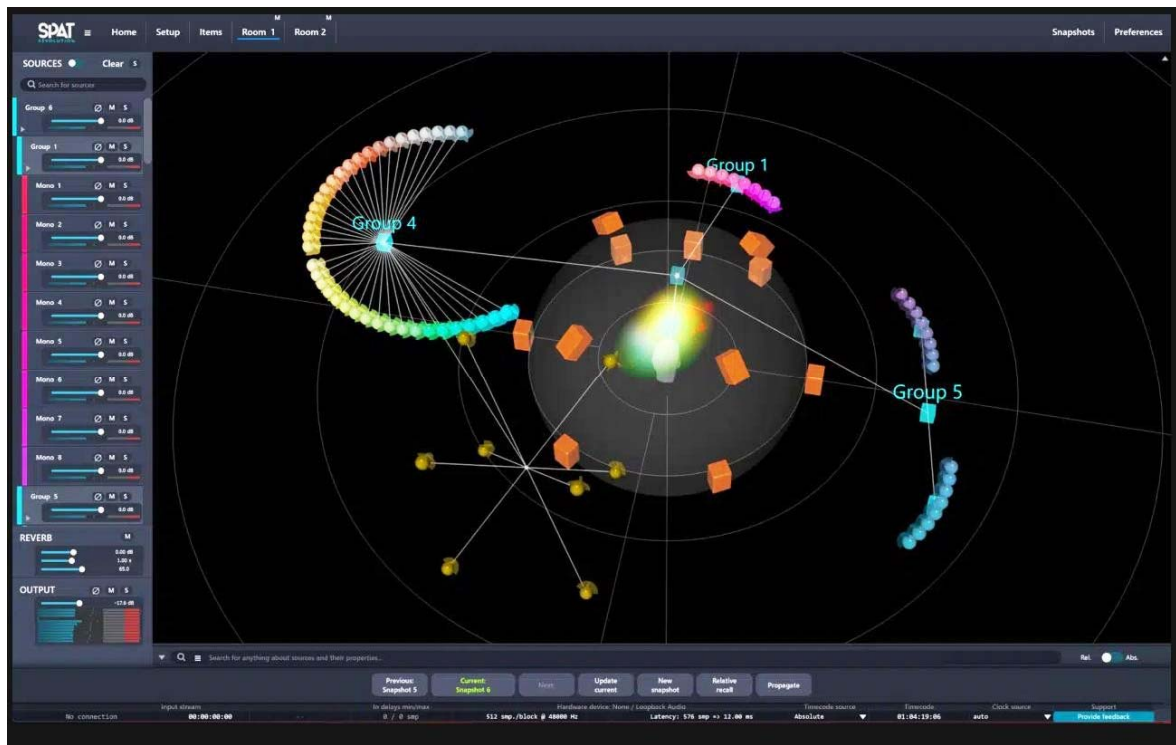
systems, and digital control systems. Together the halls will demonstrate the evolution of lighting in the live performance industry from a single product focus to total solution systems.

PLS Unicorn Series (Hall 9.3)

The PLS Unicorn Series, the most anticipated attraction at the fairground, will be staged in Hall 9.3. As a cutting-edge demonstration of lighting and sound capabilities, the series inspires through a number of innovative and interactive stage shows and immersive entertainment spaces. This allows industry players to find inspiration in creative ideas and diverse product applications.



At the previous edition, the lighting equipment sponsor of the PLS Unicorn Series, Mr Jian Su, Director of Product Resource Strategy, Foshan Yifeng Electric Appliance Industry Co. Ltd, said, "Many of our peers are bursting with ideas, but they are not sure how to implement them. PLSG is an excellent platform for helping them realise their concepts. Through the series, we can convey industry trends more accurately. We can also help channel players carve out their creative directions so that they can be more efficient when developing their businesses."



HARMAN Professional Solutions completes acquisition of FLUX SOFTWARE ENGINEERING

HARMAN Professional Solutions, the global leader in audio, lighting, and video and control technologies, announced today it has completed the previously announced acquisition of FLUX SOFTWARE ENGINEERING (“FLUX:”). The purchase includes FLUX:’s immersive, processing, and analysis solutions across live production, installation sound, content creation, and post-production.

The acquisition broadens HARMAN Professional’s offerings across multiple applications with world-class immersive technology, in addition to establishing a foundation for future innovation by bringing together FLUX:’s team with the hardware and software engineers of HARMAN Professional.

“With the growing demand from our customers for immersive audio solutions, we are thrilled to welcome

the FLUX: team to the HARMAN family,” said Brian Divine, President, HARMAN Professional Solutions. “The FLUX: team is made up of a very passionate group of people who have dedicated their careers to creating exceptional audio experiences. We are excited to work together to create new products that push technological boundaries and create culturally significant experiences.”

“We are extremely honored to join the HARMAN brand portfolio, and work alongside the teams from some of the most legendary brands in the audio industry,” said Gaël Martinet, Founder and CEO of FLUX SOFTWARE ENGINEERING. “We look forward to continuing our work developing immersive audio solutions with the significant investment, infrastructure and support that HARMAN will provide.”

France-based FLUX: was founded in 2006 by then seasoned sound recording engineer and current CEO, Gaël Martinet, for the purpose of creating intuitive and innovative audio software tools. Now, the portfolio of nearly 20 products is used globally by talented professionals across many applications.

- **FLUX:** SPAT Revolution is a powerful object-based and perceptual immersive mixing solution providing artists, sound-designers, and sound-engineers the tools to design, create, and mix outstanding real-time immersive experiences.
- **FLUX:** Analyzer is a modular RTA-system providing an extensive range of analyzer options for any audio analysis and measurement application.
- **FLUX:** Processing includes a comprehensive suite of plugins including channel strips, EQs, dynamics processing, and more.

FLUX

www.flux.audio

<https://pro.harman.com>



Resuming Asian Rigging Training and Workshop

After many years of organising the Basic Rigging training, SDA announces the 2nd post pandemic Asian training in January at its training facility.

The training will be referring as before to the updated international norms and regulations including Health & Safety, machine directory etc., as well as local standardization and regulations.

The rigging training will be held as before in cooperation with Mr. Harold Waldack, Managing Director of ICRCsarl France, ICRC Middle East and Asiarg Co Ltd., Thailand. Harold is a veteran in respect of rigging for the entertainment industry and has conducted a series of rigging trainings over the past twenty years.

The 5-day rigging course will comprise of all the basic theoretical rigging skills, such as, Risk Assessment, Rigging Basics, Calculations, PPE (Personal Protective Equipment), Hoist Technology & Controllers, as well as a hands-on workshop and truss technology.

On the last day, an examination will give the attendees an indication their comprehension of the offered topics.

The Rigging training is held at the training facilities of SDA Kuala Lumpur from January 8th till 12th 2024. Please note that the number of participating persons is limited!



For more information or subscriptions forms, please go to www.sixty82-doughty.com or contact email to info@sixty82-doughty.com

Dennis Low joins Clear-Com as part of commitment to full-service support for APAC customers

Clear-Com®'s dedication to supporting their customers with local support teams members is further enhanced with the appointment of Dennis Low to its Singapore-based team as a Technical Support Associate. This strategic investment bolsters Clear-Com's ability to provide the highest level of support for customers in the Asia-Pacific region, where it has technical support engineers in place across the region, primarily based out of Singapore and Beijing.

Over the past two decades, Dennis has worked in a wide variety of roles in the audio industry, as a sales engineer/technical support for SMX Electronics, an entrepreneur and distributor (as co-founder of Big Knob, Malaysia), and as a House of Worship AV Technician at St Andrew's Cathedral, and the Full Gospel Assembly in Singapore.

"Having taken on the role of AV department head and leading teams of volunteers in my previous roles, I believe in empowering people with the right skill sets so they do not feel overwhelmed by the technicalities of a product. That allows them to focus on what's important, which is to use the tools necessary to support their business goals. Intercom is a powerful tool when properly implemented, and I look forward to sharing my knowledge with Clear-Com end-users as part of my new role" Dennis says.



Dennis Low joins as a Technical Support Associate

Clear-Com stands apart from its competitors in its deep commitment to their customers, offering industry-leading capabilities and support/service. The dedication for local support via the technical team in the Asia-Pacific region is no different.

"Having a technical support associate with the background Dennis has will provide existing and future Clear-Com customers greater confidence that they will always be well supported by a local team of experts," says Peter Fong,



Clear-Com Director of Sales, APAC, adding that Clear-Com is also investing in its APAC Partners to ensure each has at least one fully trained technical sales engineer.

Based in Singapore, Dennis brings a wealth of experience and a deep understanding of the support Clear-Com's new and existing customers require. Fluent in English, Malay, and Cantonese, Dennis holds a Diploma in Audio Engineering from the School of Audio Engineering Kuala Lumpur and a Diploma in Information Technology from the Asia Pacific Institute of Information Technology.



www.clearcom.com



buynsellAVL.com is the easy step to taking your AV sales online with your own e-commerce store

Unlike the usual Pro Audio/Video/Lighting marketplace websites, buynsellAVL.com is not a strictly "used-gear" site. Ideal for brands and distributors to have a very affordable online store for directly sourcing the interest of new customers.

Pay 0% Commission on all sales

*Sign up is free
No payment required*

*Create your own online store
Personal or Business account*

*Buyers can contact Sellers directly
via email, messaging apps, mobile*

List up to 4 images per post

List as New or Used

Link a product or demo video

*50 days visibility for free listing
100 days visibility for paid listing*

Latest items

Sell



HARMAN

ULTRAHQ
AUDIO



Podcaster Essentials Bundle

1 month ago

\$399.00

Sell



Sennheiser Momentum True Wireless 2 (75th Anniversary)

2 months ago

\$199.00

0% commission on every sale

www.buynsellAVL.com



HARMAN Professional introduces state-of-the-art meeting room solution at Bank of Thailand

Meetings can be expected to run smoother at the Bank of Thailand after its main conference room 155 located on the 5th floor of the building, received a digital facelift with a new state-of-the-art AV control system from HARMAN Professional in partnership with Mahajak Development Co. Ltd.

Launched in December 1942, the Bank of Thailand supervises and examines financial institutions, manages the country's foreign exchange rate under the foreign exchange system, and governs assets in the currency reserve.

"The client was looking to revamp the old audio and visual set up in the meeting room with a more seamless and integrated system that would make meetings more productive. Previously, they had to manually turn each individual device on and off, which was time consuming," shared Pongsakorn Kanchanachayphoom, Director of Professional Product & Solution at Mahajak Development Co. Ltd. "With the new HARMAN system, all functionality is accessible through an

iPad where, at just a push of a button, users can now control all devices in the room simultaneously and select their desired display options with ease. In addition, there is a new auto-tracking camera system for video conferencing."

The system consists of different types of speakers to ensure surround sound and maximum clarity. The JBL CBT 100LA-1 column speakers direct audio to the conference table for improved speech intelligibility, which is important during video conferencing. The JBL Control 14C/T coaxial ceiling loudspeakers over the table evenly distribute audio throughout the room creating a more natural and realistic sound environment. Apart from ensuring that everyone can hear the audio clearly regardless of wherever they are seated, the even distribution of sound also reduces listening fatigue which is important for long-duration meetings. All JBL loudspeakers are driven by Crown amplifiers, the CD12/300 and XLS1502, with ultra-efficient patented DriveCore™ technology and streamlined functionality to ensure a powerful and pure sound experience.

Lastly the 'brains' of the system, facilitating intelligent touch control of the meeting room's functionality, is the AMX NX-2200 controller supplemented with external control boxes EXB-IO8 and an iPad that serves as a wireless user interface. "A good AV system is the backbone of our conference room as productivity and efficiency are paramount for all our meetings," said a spokesperson for the Bank of Thailand. The state-of-the-art HARMAN Professional products that Mahajak chose for our meeting room have exceeded all our expectations and we look forward to more upgrades in the future." "A high performing financial institution such as the Bank of Thailand requires a top of the range AV system to ensure meetings with stakeholders and partners are productive and efficient" said Amar Subash, VP & GM, HARMAN Professional Solutions, APAC. "We would like to thank our partner Mahajak Development Co. Ltd. for implementing HARMAN's Install products to achieve high-functioning corporate environments".

<https://pro.harman.com>

Lightware appoints Candice Siow as Regional Director for Southeast Asia

Lightware Visual Engineering, a leading manufacturer of connectivity solutions for the professional integrated systems market and a pioneer in signal management, has announced the appointment of Candice Siow as Regional Director for Southeast Asia. Based in Singapore, Candice joins Lightware with more than 15 years of sales management experience in the audio-visual industry. In her new role, she will be responsible for the company's operations in Southeast Asia and will focus on expanding Lightware's presence in the region, working in close collaboration with key stakeholders to deliver a unified corporate message and go-to-market approach. She holds a Bachelor of Arts in International Business Management as well as a diploma in Sales and Marketing Management. "I am delighted to join Lightware at a very exciting time in the company's development," commented Candice. "My goal is to build our presence in the region by working closely with our partners to deliver excellence to our users. I look forward to working with my new colleagues in the local region and as part of the wider international team." "The recruitment of Candice marks a significant step in our regional strategy," commented Robin Enlund, President of the Greater APAC region at Lightware. "Her wealth of experience and impressive achievements in the audio-visual industry are an ideal fit for the business. Supported by her leadership, I am confident we will see growing partnerships and a strengthened market presence, all while upholding our commitment to excellence for our partners and users."



lightware.com

C&C Open House: A showcase of interactive lighting

Seoul was abuzz with excitement as C&C Lightway, a prominent ETC dealer in the Korean market, hosted an open house event that brought together friends, customers, and industry professionals. This four-day extravaganza attracted over 300 attendees eager to witness the latest advancements in lighting technology. The event celebrated innovation, creativity, and music. The highlight of the open house was an awesome light show that left participants spellbound. C&C Lightway - YS Choi and AI technology programmed the event theme song. The open house showcased the remarkable capabilities of Eos Apex 10, Eos Apex 5, ColorSource Spot V, Source Four LED Series 3, Source 4WRD, Desire Fresnel, Halcyon, Lonestar, and the SolaPix family. The show was expertly controlled using the highly anticipated Eos Apex 10 with Eos v3.2 software, and participants had the opportunity to experience the Apex console and explore its powerful features that promise to revolutionize fixture programming. Also, ETC Field Project Coordinator Audrey Leung introduced the updates of Eos v3.2 and how it improves networking to fixture configuration. The latest Eos software offers game-changing tools that allow the user quickly adjust color, device and system settings and power up 3D programming.



etcconnect.com



Novatech designed and deployed K Series in the stunning Royal Exhibition Building

Melbourne's inaugural Now or Never festival attracted over 150,000 attendees to a 17-day, city-wide takeover featuring over 300 local and international artists. The festival culminated with four nights of live music and visual performances in the 143-year-old Royal Exhibition Building at the World Heritage Site of Carlton.

The Royal Exhibition Building features an exquisite Renaissance style cathedral in which Gig Control Australia, who were appointed to deliver the event for Now or Never, designed a stunning 16-metre-high video scrim that became a canvas for innovative visual displays. L-Acoustics Certified Provider Novatech co-designed and deployed a professional audio system to accompany the spectacular lighting and video.

Along with Gig Control, Novatech's imperative was to create a concert-grade sound system that would give pristine, full-range coverage to the

massive audience while supporting the innovative audio-visual acts. The catch? It all had to be done inside a World Heritage-listed building that imposed strict audio limits. Leko Novakovic, Managing Director at Novatech explains that the team needed to pay strict attention to guidelines so as not to cause structural damage to the building. "Calculating the system's output Peak Particle Velocity measurements associated with ground vibrations was essential to ensure the preservation of the building's structure," he explains.

Designing within a tall, reverberant hall, Novatech's solution featured left-right arrays of eight L-Acoustics K2 per side with a delay system of eight Kara per side. The adjustable Panflex horizontal directivity of K Series allowed Novatech to direct sound away from empty balconies and reverberant walls. Four ground stacks of three KS28 subwoofers



each provided low-end extension. Twelve Kara boxes placed evenly across the stage provided front-fill, while six Kara were used as out-fill to cover the audience areas on the sides of the main hall. DJs and live electronic music artists on stage received monitoring from 14 X15 as well as six Kara over four KS28 subwoofers. Twelve LA12X amplified controllers drove the entire system.

ncet.co
l-acoustics.com

Motiv8 designs a Kara-based system in the 1,000-capacity Auditorium Seri Angkasa

The dawn of a new era for the Malaysian broadcast media industry has emerged since the recent opening of the Angkasapuri Mediacity in Bukit Putra, Kuala Lumpur. The 18-storey office building serves as the new headquarters for Radio Television Malaysia (RTM) and Malaysia's Ministry of Information. Spearheaded by Sean Iskandar of Motiv8 Projects, the installation was a close collaboration with Stagetec Asia and VME, who have been working with RTM for many years. Iskandar has been working on various L-Acoustics K Series system rental and installation projects since 2012, including the proposal design for an L-Acoustics Kiva II-based system in the Auditorium Perdana of the older RTM building in the



same Bukit Putra vicinity. Motiv8 worked with L-Acoustics Director of Application Project APAC, Alvin Koh, to propose a design using the L-Acoustics Soundvision 3D modelling software. The initial proposal included a centre hang of six L-Acoustics KS28 subwoofers; however, it was quickly apparent that the hang would appear in-frame of certain broadcast camera angles. So Iskandar and Koh returned to the design and proposed splitting the centre hang into two. This proposal was accepted, and Motiv8 built a custom rigging bar for the two clusters of three subwoofers hung in cardioid mode. An LCR system was chosen, with two L-Acoustics A15 boxes serving as centre-fill, while the main L/R system consists of 12 Karai per side. An L-Acoustics X8 per side delivers side-fill. Eight LA4X amplified controllers drive the entire system.

l-acoustics.com

motiv8projects.com

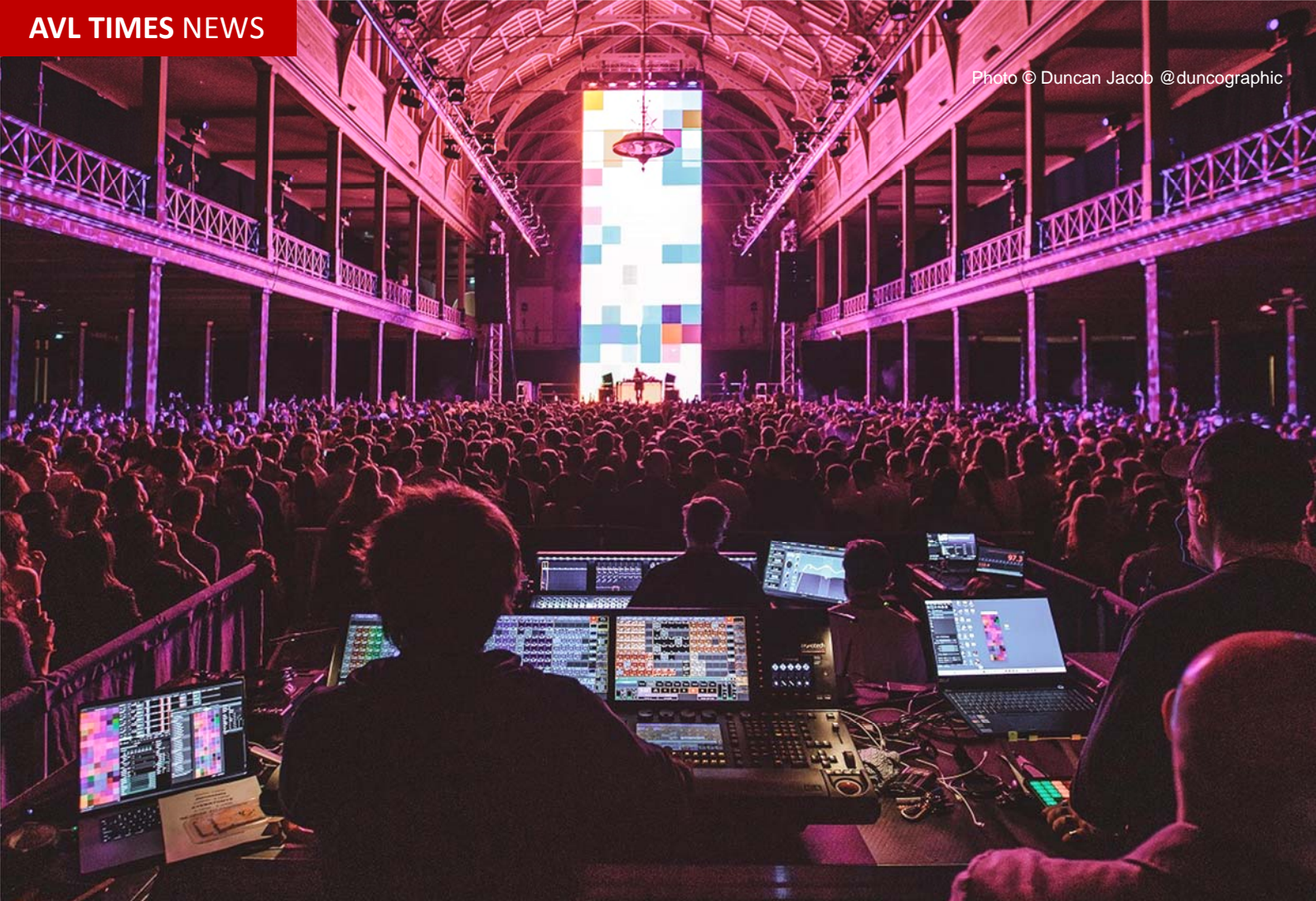
DRTCC choose Prolights fixtures for a major upgrade

Dubbo Regional Theatre and Convention Centre features the Joyce Schneider Auditorium, a 500-seat theatre with state-of-the-art facilities including a comprehensive, computerised sound and lighting control room. The theatre completed a significant lighting system upgrade, transitioning from outdated halogen lamps to more advanced technology. David Brown, the technical coordinator of the venue, explained that the upgrade had been planned for some time, but the increasing difficulty in finding and the high cost of halogen lamps expedited the need for a change. The Covid-19 pandemic, which temporarily suspended performances, provided the perfect opportunity to carry out the upgrade, and David took the chance to conduct an in-depth market research and compare various options. After careful evaluation, he presented a comprehensive report to the council for approval. Show Technology, the distributor of Prolights in Australia, was chosen to handle the lighting system upgrade. They installed 42 Prolights EclProfile CT+ and 20 Prolights EclFresnel TW. David says that the tungsten emulation offered by the Prolights EclProfile CT+ is exceptionally good, which is important as some of the touring shows simply want to use them as a conventional lantern with a colour in them. They are positioned on the bridges for easy access and from where they can do their traditional thing. "They are an excellent fixture, as are the Prolights EclFresnel TW, and they've just fitted in and done the job," said David. "I like their bright, clean output as well as their natural whites and saturated, vivid colours and of course, they match the Prolights EclFresnel TW fixtures."



David took the chance to conduct an in-depth market research and compare various options. After careful evaluation, he presented a comprehensive report to the council for approval. Show Technology, the distributor of Prolights in Australia, was chosen to handle the lighting system upgrade. They installed 42 Prolights EclProfile CT+ and 20 Prolights EclFresnel TW. David says that the tungsten emulation offered by the Prolights EclProfile CT+ is exceptionally good, which is important as some of the touring shows simply want to use them as a conventional lantern with a colour in them. They are positioned on the bridges for easy access and from where they can do their traditional thing. "They are an excellent fixture, as are the Prolights EclFresnel TW, and they've just fitted in and done the job," said David. "I like their bright, clean output as well as their natural whites and saturated, vivid colours and of course, they match the Prolights EclFresnel TW fixtures."

prolights.it



Novatech Brings ROE Visual to World Heritage-listed stage

Now or Never, a new major festival in Melbourne, Victoria, took place at the Royal Exhibition Building, one of only a few World Heritage Sites in Australia. The stage was graced with the presence of ROE Visual V8T and powered by Brompton SX40 and 2 x XD, adding a touch of modernity to the timeless venue.

The NoN team appointed Gig Control Australia who together created an impressive 16m high and 6m wide screen that perfectly matched the venue's size. "We are transforming this heritage-listed building into a venue of the future," says Elise Peyronnet, NoN Artistic director. "We are building a really massive screen to take advantage of the height of the ceiling, to use it as a canvas, to project onto it."

This big semi-transparent screen harmonizes modern and historical elements to showcase diverse styles



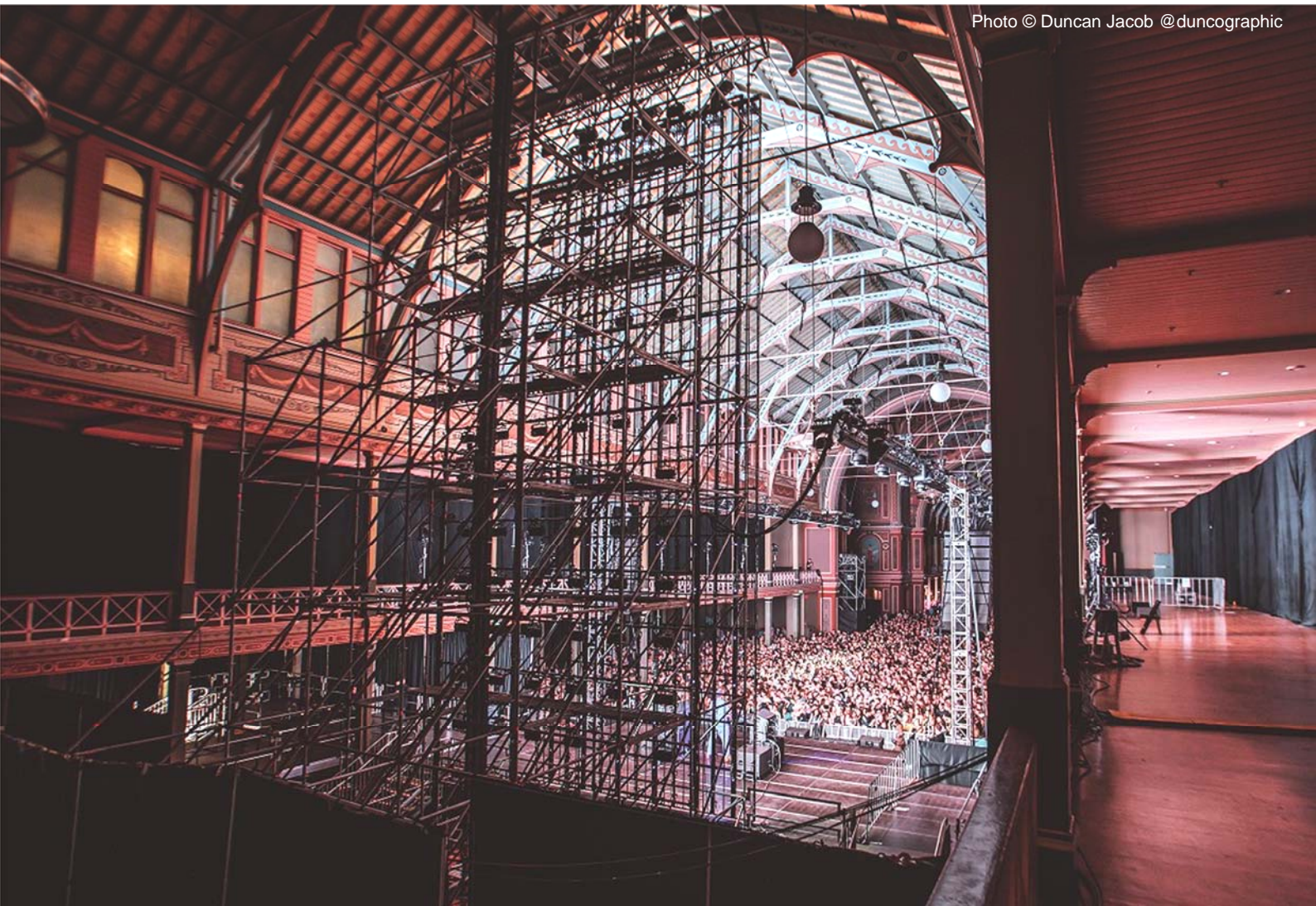


Photo © Will Hamilton Coates @will.hamiltoncoates

of industry-leading artists, adding a three-dimensional perspective to each performance and enabling attendees to immerse themselves in the music while enjoying the beauty of this historical landmark.

As the trusted partner of NoN, Gig Control engaged Novatech to provide full turn-key production for the series of events held in the venue. As part of the design process, Gig Control and Novatech selected the ROE Visual V8T

(semi-transparent screen) to merge art with technology. “Vanish V8T panel is a proven product that has been and is being used on a variety of corporate and concerts/festivals across Australia,” states Leko Novakovic, Managing Director from Novatech. “We have over 400sqm of V8T now, and are the only production company in Australia with the product.”

“It is definitely a multi-sensory entertainment experience for everyone at Now or Never. We enjoy working with Novatech and thanks again for their trust and bringing us to a world heritage-listed stage! Both of us share the same goal of delivering extraordinary visual effects to audiences and trust-worthy quality to customers. It is such a success and we can’t wait for the next one.” says Grace Guo, the sales director of ROE Visual.

gigcontrol.com.au
ncet.co
roevisual.com

Adam Hall Group appoints Joint Venture as exclusive distributor for the Philippines



The Adam Hall Group continues to expand its international distribution network. With immediate effect, Joint Venture Audio Visual and Lighting Inc. will take over the exclusive distribution of Adam Hall Group's own brands LD Systems, Cameo, Gravity and Palmer in the Philippines. The event technology provider with headquarters in Neu-Anspach, Germany, thus gains another distribution partner for the important APAC region. Joint Venture Audio Visual is a corporate merger of several companies, including full-service provider Systech Lighting and Controls Inc. Under the umbrella of Joint Venture, Systech will represent the AVL brands of the Adam Hall Group in the Philippine market. "We are pleased to add one of the largest event technology manufacturers in the world to our distribution portfolio with the solutions of Adam Hall Group," explains Oliver C. Yulo, President Joint Venture Audio Visual Lighting Inc. "Since the end of the Covid pandemic, the APAC region has been one of the fastest growing markets ever. Together we will implement numerous interesting projects and further increase the awareness of the Adam Hall Group brands in the Philippines." Glenn Lin, Business Development Manager, Asia Pacific: "Joint Venture is the leading distributor for the AVL sector in the Philippines. With separate subsidiaries for MI/Retail, Install and Hospitality, the large team offers ideal conditions to perfectly match our diverse portfolio to the different target groups."

adamhall.com

HDL 26-A touring remote locations to immerse in Aboriginal culture of outback Australia

Putting together captivating shows amongst the red dust of outback Australia has become plain sailing for ARDS Aboriginal Corporation. The Northern Territory based organization has enjoyed a marked improvement in the sound quality of their latest events thanks to a recent investment in RCF's powerhouse HDL 26-A line array system. Giving Indigenous communities a platform that unites mainstream providers and Aboriginal people, ARDS maintains a number of beneficial services, including Yolngu Radio, a key community broadcast. In addition, the team organizes a number of events centred around celebrating the significance of Aboriginal language and culture, as ARDS's Nhulunbuy Station Manager, Will Porter explains: "Yolngu Radio has a long history of facilitating community festivals in the region. These are community led events that celebrate culture through song and dance. These festivals take place in incredibly remote locations- creating a logistical nightmare until our recent purchase of the new RCF HDL26-A speakers. Due to their compact build, transporting the speakers to these remote locations has become substantially easier. And even more importantly, it was immediately obvious to us that the quality of sound was dramatically better than our previous equipment."



rfc.it



RealProtec uses Brompton LED processing for Gwangju Content Cube VX Studio

RealProtec is a technology company that offers innovative solutions for South Korea's film and media industries. Supported by a highly skilled team and leveraging cutting-edge LED technologies from Brompton Technology and INFiLED, RealProtec collaborated with CJ OliveNetworks and Jinwoo M&C to create Gwangju Content Cube (GCC) VX Studio, the country's largest VP studio operated by a Korean government organisation, the Gwangju Information & Content Agency.

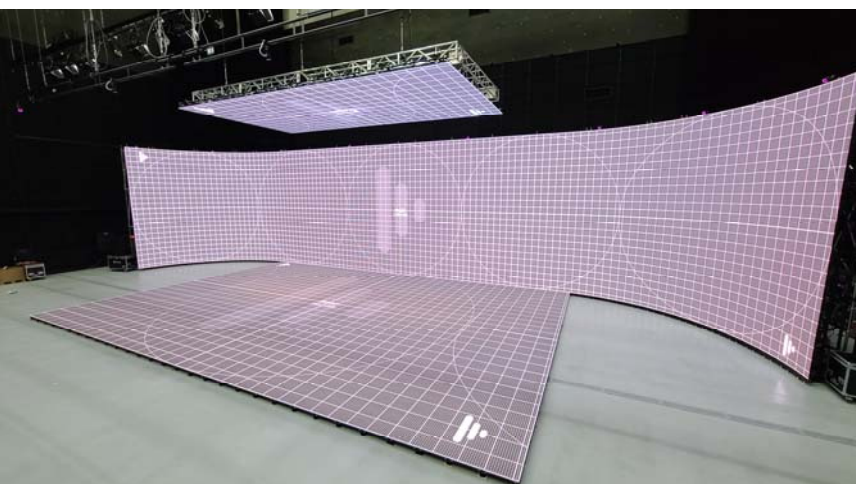
Part of GCC, the new VX Studio covers 1,466sqm of the overall facility and

features an AV system from Sony and a disguise vx4 media server and rxll render system, while the camera tracking system in operation is by STYPE. The main LED wall comprises INFiLED DB2.6 S8C LED panels, measuring an impressive 30m wide by 6m tall. INFiLED DF3.9mk-C8 LED panels are used to create a 15m by 10m floor, while the ceiling is constructed with INFiLED AR3.91 S8C panels, measuring 10m by 5m. The entire LED setup is powered by 27 4K Tessera SX40 LED processors, along with a whopping 106 Tessera XD 10G data distribution units, which work seamlessly with the Tessera SX40 to provide a single-box solution for

data distribution with full data cable redundancy and effectively handle the challenges posed by this large LED display system.

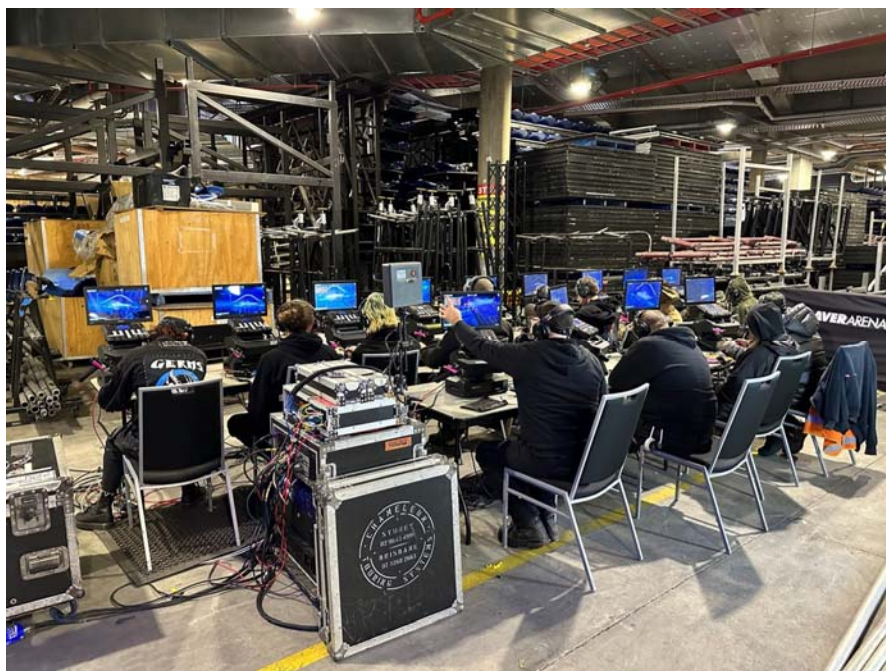


bromptontech.com
Photos © RealProtec



GREEN-GO system helps Chameleon smash high-profile Australian tours

Australian live entertainment supplier Chameleon Touring Systems has upgraded its communications solution from an old analogue party line system to a GREEN-GO digital package, to aid reliable communications between lighting teams on tour. GREEN-GO dealer Event Communications Australia masterminded Chameleon Touring's investment, drawing on extensive experience of digital communications solutions for the live music touring market. "Chameleon's previous comms systems was based around a basic single channel, analogue party line system which were starting to be less reliable, so it was time to update to current technology," says Event Communications Australia's Rod McKinnon. The GREEN-GO system has already gone out on international artist tours in Australia. The GREEN-GO products now in Chameleon's stock include 16 x GREEN-GO BPX wired beltacks with 16 x GREEN-GO HS200D Dual muff headsets; 2 x GREEN-GO SW8.1 PoE Switches and 1 x GREEN-GO Interface-X.



greengodigital.com

Powersoft steps up Japan ambitions with new office

Powersoft is preparing for a new era of growth in Japan following the opening of a dedicated office in Tokyo. The Japanese office is the Italian company's fourth, joining its headquarters in Scandicci, its US business in Flanders (New Jersey) and its China representative office in Beijing. Spearheading Powersoft's expansion in Japan is its newly appointed market development manager, Haruka Murayama, a pro-audio veteran who brings nine years' industry experience to the role. Murayama most recently spent five years in sales with Bose Professional's Japanese subsidiary, where she became familiar with X Series, Powersoft's high-powered live sound amplifier platform, and previously worked for the Japanese distributor of Harman, Shure and DPA Microphones. Luca Giorgi, Powersoft's sales director, says Murayama's experience and expertise will be essential to meeting the challenge of growing the Powersoft business in Japan. "Powersoft views Japan as a very strategic market where we have more potential for growth," he explains. "Powersoft's growth in the country has been good through our historical Partner, AudioBrains, but we believe that we can increase and consolidate that growth by adding Powersoft's local resources, and it's for this reason that we have decided to set up a representative office with Akira Mochimaru and the recent appointment of Haruka: to have local people able to boost the generation of extra demand through local relationships. "This direct link with the market will help us to better receive feedback and requests from clients and enable Powersoft to provide better products and services to such a demanding market."



Haruka Murayama

powersoft.com



DiGiCo Quantum5 and KLANG deliver perfect solution for Jacky Cheung 60+ Concert Tour

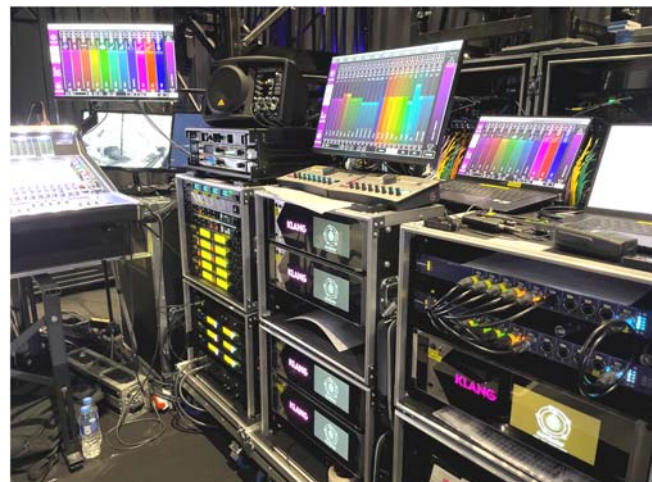
Hong Kong singer and actor Jacky Cheung kicked off his latest tour at The Venetian Macao Cotai Arena in Macau, China. The Jacky Cheung 60+ Concert Tour not only signifies the 10th solo concert tour of his illustrious career but also marks the superstar's first large-scale event after celebrating his 60th birthday. DiGiCo Quantum5 consoles and a KLANG immersive monitor system for the tour, provided by Rightway Audio Consultants (RAC), DiGiCo's official distributor in China.

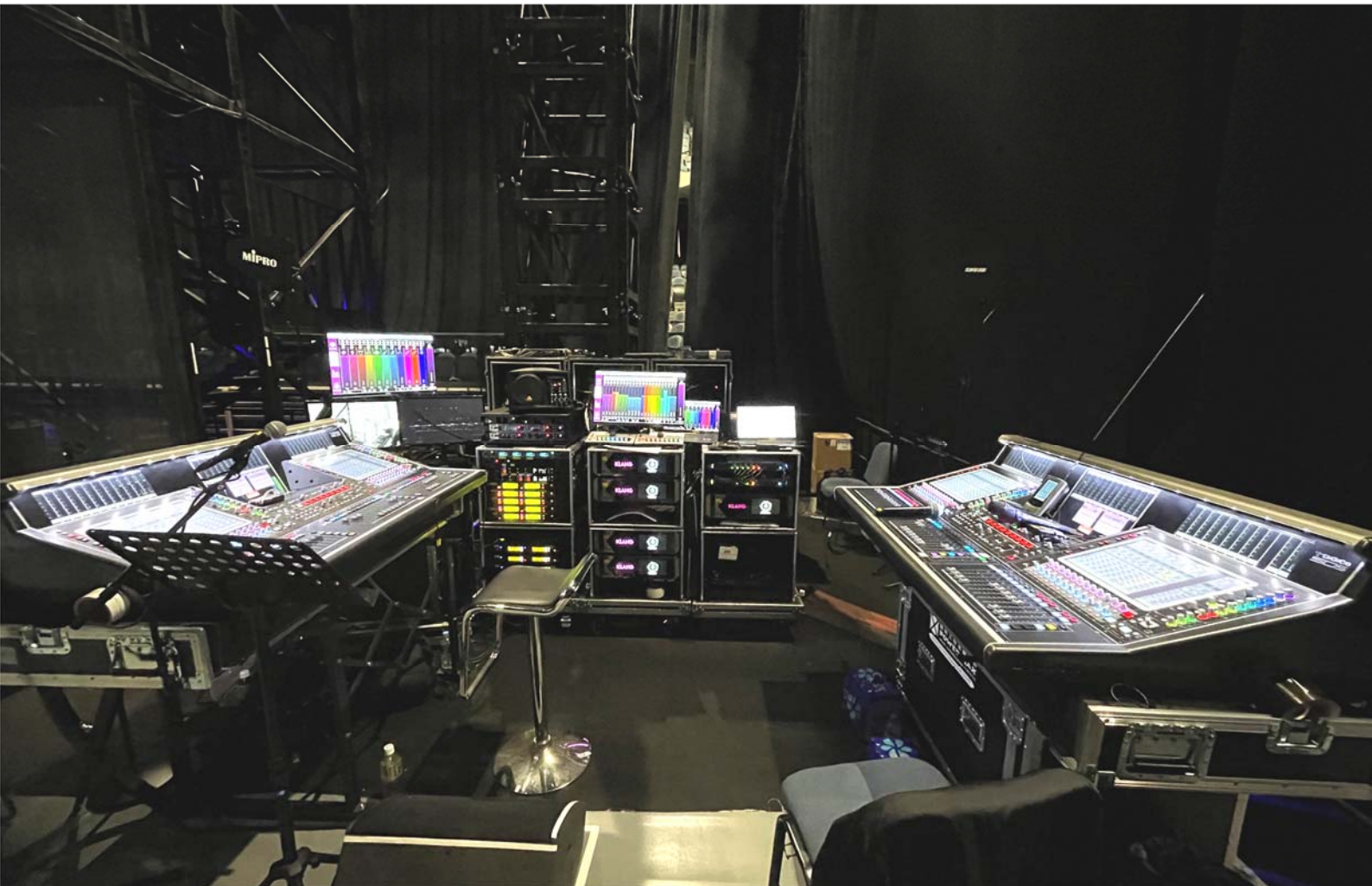
Revered as an icon in Hong Kong's popular culture and dubbed the "God of Songs", Cheung's accolades include a World Music Award for 'World's Best-selling Asian artist', a Billboard Music Award for 'Most Popular Asian Singer', and a Guinness World Record for the largest combined audience for a live act in 12 months, with over two million audience members. At the project's outset, the RAC team offered support in system design, setup, and decisions about the mixing console to be used, as well as the connectivity of

the KLANG system. It was during this phase that they recommended to use the Quantum5, which comes equipped with the latest features, allowing engineers a greater space to create outstanding results.

The unique nature of the live performance included a large-scale orchestra. To ensure an exceptionally high standard of audio, each instrument was individually picked up by deploying a large number of microphones, and each musician required a dedicated monitor mix capable of being controlled by themselves," says Pan Weijie, System Engineer at Rightway Audio Consultants. "This necessitated Monitor Engineer, Mike Wong, deploying a substantial number of output busses, plus six groups of MADI outputs. The Quantum5 proved to be the ideal console for effectively managing these complexities, with a total of 175 inputs and 150 outputs being utilised."

Weijie notes that having so many musicians on stage simultaneously requires them to not only hear their own instruments, but also be aware of the other instruments being played. "This underscores the critical importance of an effective monitoring system,. That is why we employed 55 KLANG:kontrollers and five KLANG:konductors, creating an immersive personal monitoring system for the 53-piece orchestra. This marks the first deployment of such a large KLANG system in the APAC region!





With the integration of KLANG, the feeling of being sonically isolated is eliminated and effectively brings the feeling of a natural, acoustic environment into the headphone mixes. "This results in heightened clarity for each instrument's sound," Weijie adds. "It also helped to reduce the players' hearing fatigue and the need for high monitoring volumes, thereby significantly improving hearing protection."

In addition, the objects could be visualised in the KLANG:app interface, enabling intuitive yet precise

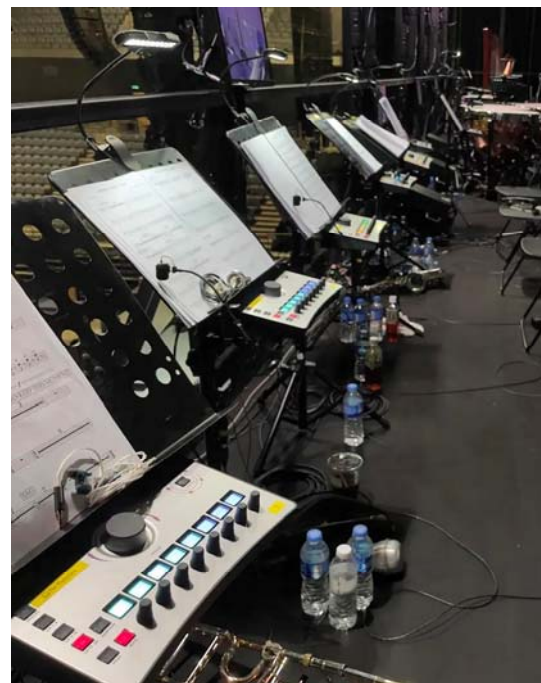
positioning of instruments by simply dragging the icons, offering the musicians naturalness and flexibility in shaping the sound within their individual in-ear monitors.

Quantum5 consoles were employed for both FOH and Monitors, with the latter benefitting from DiGiCo's seamless integration with KLANG.

Li Wenxi, RAC's Senior System Engineer was on hand for monitoring support during live performances at Cotai Arena and was delighted with the Quantum 5's performance.

"I love its reliability and security," he concludes. "The Quantum5 facilitates interface control and information interaction between DiGiCo and KLANG, granting musicians greater room for their personal mixes. Boasting over 250 channels, it can satisfy the needs of musicians and singers at the same time.

"After several concerts, the engineers became very proficient with the Quantum5s. Thanks to the powerful



DiGiCo and KLANG setup and its intuitive interface, we have established a highly efficient solution which has worked exceptionally for the Jacky Cheung 60+ Concert Tour!"

Adam Hall Group appoints Acoustic & Lighting System as exclusive distributor for Vietnam

The Adam Hall Group continues to expand its international sales network. With Acoustic & Lighting System, the event technology provider headquartered in Neu-Anspach, Germany, has gained an experienced distribution partner in Vietnam. Acoustic & Lighting System is one of the leading event and AV technology distributors in Southeast Asia and will take over the exclusive distribution for the solutions of the Adam Hall Group brands LD Systems, Cameo, Gravity and Palmer with immediate effect. In addition to the Vietnam market, Acoustic & Lighting System with its more than 150 employees also covers the sales markets of Malaysia, Singapore, Indonesia and Thailand. The extended range of services offered by the A&L Group includes technical project consulting as well as a comprehensive service and maintenance offer for all sales brands. "The Vietnamese market is one of the fastest growing regions in Southeast Asia and offers tremendous opportunities for a broad-based manufacturer like Adam Hall Group," comments Ben Lee, Country Manager Vietnam of Acoustic & Lighting System.



adamhall.com

Digital Projection laser projectors transform Dubai's Khawaneej Mosque

The Khawaneej Mosque in Dubai, United Arab Emirates, was brought to life with a radiant glow thanks to Digital Projection's partner Artabesk and Digital Projection's TITAN and M-Vision laser projectors during one of the country's most significant cultural and religious events. "One of the most crucial part for us was to ensure the mapping was perfectly aligned, and the brightness was high enough,"



states Mounir Harbaoui, architectural projection designer and founder of Artabesk. "In order to create a stunning visual experience for the audience, the projectors needed to boast impressive brightness levels. This is the reason we chose these specific models from Digital Projection." Artabesk mapped the Khawaneej Mosque using very small layers of images, resulting in intricate and captivating animations of various colours and patterns. A Dataton WATCHOUT media server, capable of handling high-resolution media files, enabled each projected image to cover an area of approximately 20 x 13 metres.

digitalprojection.com/emea/



Astera dreams in the park

A Midsummer Night's Dream – one of Shakespeare's most enduring, timeless, and intricately cerebral comedies – is always a delight to light, and Singapore-based lighting designer Gabriel Chan relished this task for the 2023 Shakespeare in The Park (SITP) version of this magical and mischievous work.

Gabriel chose 67 Astera NYX Bulbs to get light sources into some of the more inaccessible parts of Richard Kent's stunning 'cityscape' set design, a cocktail of architectural fantasies that reimagined Athens as a stark industrial landscape that transformed into a dynamic hi-tech playground for the magic parts of the narrative. The set needed careful lighting from specific places and NYX Bulbs proved a perfect solution.

With the judicious location of the NYX Bulbs, Gabriel was able to colour segments of the set diligently and in detail, and to dramatically shift the mood of the piece according to the narrative, crafting the dynamic array of

different atmospheres needed. He did this together with approximately 150 other lights all helping to deliver this masterpiece of human nature, temptation, and folly.

Gabriel's main concern in architecturally lighting the scenic elements was that the fixtures had to last the entire 4-week run outdoors. Having had "less than satisfactory" experiences during previous SITPs – this was his seventh season – using DIY LED products, his pitch to SRT this year was focused on "needing quality manufactured products with IP protection."

Astera NYX Bulbs are IP44 rated and splash proof so they can survive rain and Singapore's constant humidity. Gabriel and his team also rigorously tested them, including by running the bulb under a tap for "an extended duration" to check the ingress protection which they found to be "very satisfactory". He adds that the NYX Bulb's Bluetooth and CRMX wireless connectivity was "ideal for the troubleshooting requirements and in

fact the greatest utility for this project as we didn't have direct access to the fixtures".

The Singapore Repertory Theatre purchased the 70 x NYX bulbs specially for this production of which 67 were used in the lighting scheme, with three as spares.

Before using NYX Bulbs for this production, Gabriel has used Astera's Titan Tubes, AX1 tubes and Hydra Panel products on other smaller shows and on previous SITP productions.

On Astera generally, Gabriel thinks the products and accessories are "well designed and built," and for projects needing wireless control, some form of IP rating or portability, he regularly takes Astera as a starting point for designing and drawing up a lighting plot.

astera-led.com

Photo © Chripan Chan

PPDS brings Philips professional displays and software solutions in India with PPDS Studio opening

PPDS, the exclusive global provider of Philips digital signage, interactive displays, direct view LED, professional TVs and complementary solutions, is delighted to announce the latest phase of its accelerated investment and expansion strategy in India, with the opening of its 'state-of-the-art' PPDS Studio in New Delhi.

Extending its network of PPDS Studios into India for the first time, the new facility – in New Delhi's National Capital Region, Gurugram – is part of a deepening commitment from PPDS to supporting existing, new, and prospective local partners and customers on the transformational benefits and capabilities available through its innovative portfolio of professional display solutions. Solutions on show in the PPDS Studio at the opening, which will evolve as new solutions become available and to match demand, include: digital signage (Philips D-Line, Philips Q-Line), videowalls (Philips X-Line), interactive displays (Philips E-Line, Philips T-Line), direct view LED (Philips L-Line), Professional TVs (Philips MediaSuite with Chromecast built-in), and the groundbreaking new, multi-award winning 'zero power' Philips Tableaux Advanced Colour ePaper (ACeP) signage display.



ppds.com

Brompton Technology powers state-of-the-art extended reality for Hong Kong's Votion Studios

Votion Studios, a technology-driven creative agency in Hong Kong, incubated by Vobile Group in 2021, has launched a new, world-class virtual production studio that centres around an AOTO LED display powered by industry-leading LED video processing from Brompton Technology. As one of Hong Kong's foremost XR and VP studios, Votion combines a strategic fusion of cutting-edge technologies and collaborative alliances to provide content creators with a first-class solution that spans the entire production cycle. In February 2022, Votion embarked on a strategic manoeuvre that underscores its assurance of excellence. The company reinvested in its LED volume during the year, replacing the original LED configuration with advanced AOTO LED panels and Brompton's Tessera LED processors. At the heart of the studio's capabilities are three AOTO LED displays: an RM 2.3mm curved LED wall, measuring 10 by 3.5m; an 8.5 by 5m AE 2.3mm LED floor; along with an M3.7mm height-adjustable LED ceiling, which spans an impressive 4 by 3m. The entire setup is driven by five Brompton Technology Tessera SX40 LED processors, complemented by four Tessera XD 10G data distribution units to deliver a unified data distribution solution.



bromptontech.com



Successful LD SYSTEMS DAY - First MAILA presentation in Dubai

The Adam Hall Group looks back on a successful LD SYSTEMS DAY in Dubai. Together with the LD Systems sales partner PRO LAB, the global event technology manufacturer invited to a one-day partner and customer event at the PRO LAB headquarters. The highlight was the first hands-on demonstration of the LD Systems MAILA system in the United Arab Emirates.

After an introduction of the Adam Hall Group and its long history in the field of event technology, Viktor Wiesner, Senior Product Manager, Pro Audio, guided the numerous attendees through the constantly growing LD Systems portfolio, followed by a detailed product demonstration of the MAILA (Modular All-Round Intelligent Line-Array) system by LD Systems Field Application Engineer Jens Kleinhuis. In close exchange with the experienced

live sound engineer, the participants of the LD SYSTEMS DAY were able to convince themselves of the flexibility, the electro-acoustic design and the innovative features of the groundbreaking sound reinforcement system in a hands-on session. In general, LD Systems and PRO LAB placed a lot of emphasis on the intensive exchange between existing customers and potential interested parties and the LD Systems team from product management, product development and technical support.

"The LD Systems Day was a complete success," explains Markus Jahnel, COO Adam Hall Group. "Together with our sales partner PRO LAB, we created an all-round successful event for our partners, customers and interested parties in the GCC region. We were particularly pleased that we were able to demonstrate our MAILA system in



detail for the first time in Dubai. The reactions were positive throughout and we are very excited to see and hear about MAILA in Dubai and the region in the near future. At this point, we would like to thank the entire PRO LAB team and all visitors of the LD Systems Day. We are already looking forward to the next edition!"

adamhall.com

Lightware partners with Tico ZhiSheng to accelerate expansion into Chinese market



Lightware Visual Engineering, the leading European AV manufacturer for the professional integrated systems market, is delighted to announce that it has entered into a partnership with Tico ZhiSheng Information Technology Co, Ltd to further accelerate the company's expanding business operations in China. Tico ZhiSheng was established in 1994 and has grown impressively since, cementing a reputation across China as a leading product supplier and service provider of audio and video product system solutions, with a proven track record in integrating design consulting, equipment supply, after-sales debugging, and after-sales service. It has developed five national sales and service centres, with headquarters in Beijing and Foshan, branches in Shanghai and Guangzhou, and a joint branch and technology exchange centre in Chengdu. The geographically proximate service model, combined with rigorous scientific project management, full professional services, and an efficient marketing mechanism, makes Tico ZhiSheng the ideal company for Lightware to form a strategic partnership with, following the ending of its deal with its previous distributor, Lightware China/ Beijing Laiwei Visual Technology.

lightware.com

Bamm Bamm Wolfgang upgrades from 5.1 to Dolby Atmos with PMC monitors

Bamm Bamm Wolfgang, a music and audio post production facility in Sydney, Australia, has opened a PMC-equipped Atmos mixing room that is catering for a wide variety of immersive audio projects, from film and television programmes through to advertising, games and music. Established in 2017 by sound designer, music producer and composer Adam Alexander, Bamm Bamm Wolfgang is housed in the Viking Lounge complex. The decision to upgrade to Dolby Atmos was taken almost by default. The facility had already installed a PMC 5.1 monitoring system, but when Alexander and studio partner, mix engineer and musician John Romeo, heard how good the monitors sounded, they decided to go a step further and create the perfect environment for mixing immersive audio. Bamm Bamm Wolfgang's 7.1.4 monitoring system, which was supplied by local dealer AKA Pro Audio, consists of seven PMC twotwo6 monitors for LCR and surrounds, four PMC twotwo5 monitors for overheads and two PMC twotwoSub1 for the low end. Conversion and routing are handled by Apogee Symphony Mk II with an Avid S1 Control Surface. The studio also has Pro Tools, Nuendo and Logic DAWs; preamps and summing by Avalon, Neve and Sebatron, and microphones by Neumann, AKG, Coles, Sennheiser, Rode and Shure.



Adam Alexander and John Romeo



pmc-speakers.com
Photos © Darby Deck



OMG uses Brompton LED processing to create dazzling VP spectacular for Star Awards

As the largest content creator and national media network in Singapore, Mediacorp operates a suite of TV channels, radio stations, and multiple digital platforms. The 28th edition of Mediacorp's Star Awards, was themed "Beyond | Celebrations," and was reimagined as a star-studded concert. Oceanus Media Global (OMG) worked with Mediacorp to create the opening segment and after credit scene for the award ceremony using their next-generation Futurealistic Studio, with a high-tech LED volume powered by Brompton Technology LED processing.

Founded in 2020, OMG is a unique creative media tech company that represents a new multi-disciplinary intersection point in the industry. It comprises six partner companies: Resolute, AP Media, Anomalyst Studio, AP Academy, Scion Technik, and Grayback Esports, all of which are experts in their respective fields. These companies have joined forces with the primary objective of leading the way in the utilisation of immersive media, virtual production, and creative tech in the media industry of South-East Asia.

The LED setup at OMG's Futurealistic Studio includes a 4K curved LED screen comprising broadcast standard P2.6 LED panels from ShowHo, measuring 11 metres long by six metres deep and four metres high. The screen is powered by 4K Tessera SX40 LED processors, offering a wealth of industry-leading features, including HDR and Dynamic Calibration, as well as Extended Bit Depth, PureTone, ChromaTune, Dark Magic, Genlock and others, bringing unrivalled creative and colour management capabilities.

"When we established OMG, we aimed to combine the creative, media, and tech domains in a single space to enable convergence," says Nick GC Tan, CEO of OMG. "Our team comprises multiple experts such as producers, immersive multimedia tech specialists, studio personnel, audiovisual teams, light specialists, and more. Many people think that the concept of immersive media is just simply an LED volume, but it's so much more than that. It also covers live streaming, e-sports, virtual production, immersive media, the metaverse, and virtual avatars. Our

Futurealistic Studio is a one-stop shop for all those disciplines, creating unforgettable XR, MR, and AR experiences."

"Brompton was the clear choice for us when we opened the studio last year, and it remains our top choice today," he says. "The lifelike and ultra-realistic colour reproduction that Brompton provides is unmatched and exactly what visual effects supervisors are looking for, making Tessera LED processors a gold industry standard for virtual production studios. The straightforward usability of the Tessera software is also a major factor for us, as it streamlines our workflow and enhances our productivity. Ultimately, it's the combination of colour quality innovation and user friendliness that makes Brompton our go-to brand for LED processing. Thanks to the SX40, we can deliver stunning and professional-looking productions, which gives both us and our clients peace of mind and confidence in the final output."

[bromptontech.com](https://www.bromptontech.com)

Ideal Systems deliver 4K NDI studio for leading Singapore realty company PropNex

Ideal Systems announces that it has designed, built and delivered brand new 4K, NDI® based, corporate production studios with live



streaming capabilities for PropNex Limited, Singapore's largest public listed homegrown real estate agency. The new cutting-edge production facilities are located at PropNex's head office in Singapore HDB HUB. At over 1,700 SqFt, the extensive studios contain a fully featured production control



room and a large chroma key green screen set for virtual productions. All the studio cameras are 4K Native NDI, and all the networking and production systems from BirdDog, Kiloview and VizRT are run on the latest NDI 5 technology standard. The new PropNex studio is built in what was formerly a large office space. The studio will provide unprecedented communications ability for PropNex to produce and live-stream high quality 4K professional video content and provide a content library to its customers and over 12,000 sales professionals.

idealsys.com

AUDAC appoints Mahesh Baliga as Sales Manager for India

AUDAC, a leading global player in the audio and video industry, is pleased to announce the appointment of Mahesh Baliga as the Sales Manager for India. In this role, Mr. Baliga will be responsible for driving AUDAC's growth and expansion in the Indian market, working closely together with the company's Indian distributor, AV Essentials & AUDAC's APAC sales manager Sebastian Chong. With over 10 years of extensive experience in the audio video industry, Mahesh Baliga brings a wealth of expertise in channel sales management and business development to his new position. Prior to joining AUDAC, Mahesh Baliga held various managerial positions at reputable companies within the industry. Notably, he served as Regional Manager for Install Sales at Alphatec Audio Video Pvt Ltd and as Regional Sales Manager at AWAN India Pvt. Ltd.. Sebastian Chong, the APAC Sales Manager at AUDAC, expressed enthusiasm for Mahesh Baliga's appointment, stating, "We are thrilled to welcome Mahesh to the AUDAC team as the Sales Manager for India. His wealth of experience in the AV industry and strong track record in sales management make him a perfect fit for this role. We are confident that his leadership and strategic vision will further strengthen our position in the Indian market." In his new role, Mahesh Baliga will be responsible for expanding AUDAC's presence across India, fostering strong partnerships with AV Essentials, and driving the company's products and solutions to meet the diverse needs of customers in the region. His expertise and passion for the industry will undoubtedly be instrumental in shaping AUDAC's growth trajectory in India.."



audac.eu

NOW YOU CAN SELL BRAND NEW PRODUCTS ONLINE

www.buynsellAVL.com

提供各种类型的新的/二手的专业影音-
视频灯光、乐器和音响设备。
轻松找到您需要的任何产品。

1st — Create Account

Create Account

Please sign up to your personal account if you want to use all our premium products.

Name *

Your Name

Email *

Your email

Password *

Password

Confirm Password *

Password

Phone Number *

Shop phone

Country *

Select Countries?

I am a Personal Seller

I am a Business

I agree to Terms of Service and Privacy Policy

Create

Already registered? Login

Or

Continue with Google account

- Create your own Store for free
- Choose to have a Personal or a Business account
- NO credit card information and payment needed
- Click CREATE
- You are ready to start selling!

2nd — Upload your product for sale

Upload your product

Add photo

Maximum 4 photos

Categories * Pro Audio

Status * Status?

Brand & Model * Warranty (optional)

Brand & Model Warranty (optional)

Location * Condition *

Select Countries? Brand New

Price * Fixed / Negotiable *

0.00 USD Fixed / Negotiable? *

Video

Ex: <http://youtube.com/watch?v=XXXX>

Title *

Product name

Description *

Up to 250 words

Name *

Your name Phone

Your phone

Email *

Your email Address

Your address

Chat with seller:

Your Shop List

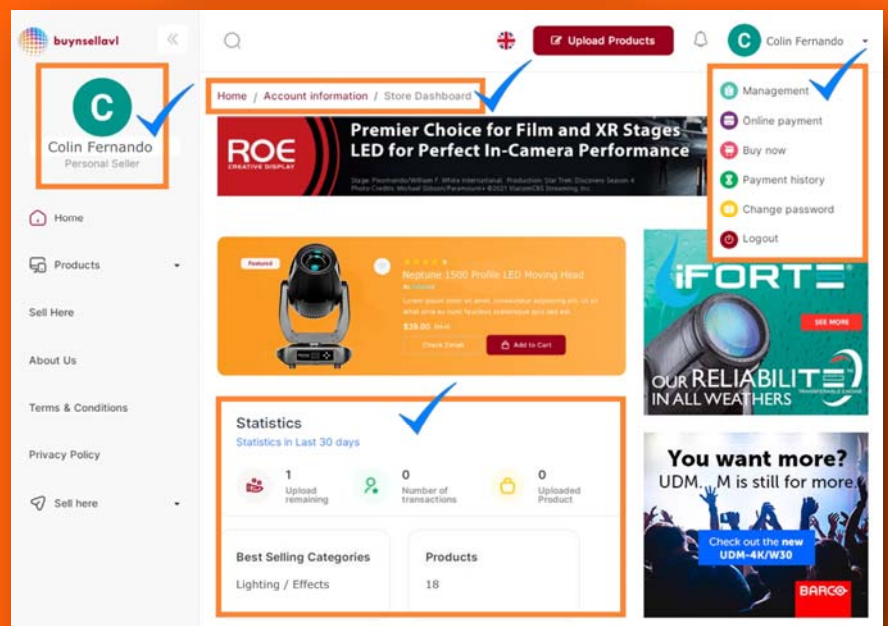
I agree to Terms of Service and Privacy Policy

Preview Post

- Up to 4 product images in 1 post
- Link a video
- Include your contact details for the buyer to contact you directly
- Click POST
- Your product is now looking for a buyer!

每天新推送

Audio 音频 Lighting 灯光
Video 视频 Rigging 索具
Musical Instruments 乐器



Click here

WWW.BUYNSELLAVL.COM



Clear-Com Version 13.1 for Eclipse HX Digital Matrix

This release includes industry-first Role-Based Workflow, NMOS compatibility and support for the 2X10 Touch Desktop Panel.

Clear-Com® has released EHX 13.1, the latest version of configuration software for the Eclipse® HX Digital Matrix. EHX Version 13.1 delivers an industry-first innovation with role management advancements for a streamlined configuration process and improved user experience, making it easier for users to stay connected.

This update also delivers important compatibility with NMOS4 and NMOS5 standards, ensuring interoperability and discovery across networks, as well as support for Clear-Com's 2X10 Touch™ Desktop Panel.

“Clear-Com understands that users are constantly looking for improvements to usability and interoperability of their intercom system,” comments Simon Browne, VP of Product Management at Clear-Com. “With EHX 13.1 we’re offering a truly game-changing feature with role-based workflows along with support for current NMOS standards and the 2X10 Touch desktop panel. We’re thrilled to continue to support our Eclipse-based systems with these ongoing innovations.”

Who isn't looking for a smarter approach these days? In EHX 13.1 Clear-Com delivers a unique feature with role-based logins, streamlining configuration and allowing users to quickly move from device to device without missing a beat. System administrators can set a single key to contact a user regardless of the device they are logged on – saving the effort of having to configure several keys in the instance that a user moves between several devices during a



EHX™ 13.1

Now Shipping

- Role-based workflows
- Compatibility with NMOS4 and NMOS5 standards
- Ensuring interoperability and discovery across networks
- Support for Clear-Com's 2X10 Touch™ Desktop Panel

Clear-Com®
AN HME COMPANY



production. On top of this, the user experience is greatly improved, with a simplified login to whichever endpoint device is closest at hand, with keys that autofill their specific configuration allowing a “follow-me” operation. Role-based workflows is the way of the future – an intercom experience that is efficient, personalized, and seamless.

Clear-Com continues development around the ST2110-30 standard as NMOS (Networked Media Open Specification) IS-04 and IS-05 are being

added to EHX 13.1. IS-04 relates to the Discovery and Registration of devices on a network and IS-05 handles the device connection and management. The addition of these specifications will make it simpler and much faster when setting up an audio network of IP capable devices.

EHX 13.1 additionally supports the new 2X10 Touch Desktop Panel, a 20-key, IP-based panel that provides a compact, intuitive desktop option for users of Eclipse HX.



Click this link for more information at www.clearcom.com

INFiLED Launches CBSF Technology for xR/VP market

INFiLED, a global leading manufacturer of LED displays, is delighted to announce the recent launch of its game-changing CBSF (Color & Brightness Shift Free) technology, which marks a significant leap in xR/VP market.

As the market expansion and technical development of xR technology are interdependent, INFiLED's commitment to contributing to xR through technology will further promote the rapid development of the virtual production industry. With CBSF technology, INFiLED is setting a new benchmark for color performance in xR/VP.

INFiLED's new solution, powered by the innovative M2 chip with chip-type LED five-sided aims to eliminate conventional LED chips which nowadays fall short of enabling accurate color reproduction due to technical limitations such as color shifts in the vertical and horizontal viewing angles and uneven brightness.

About CBSF main characteristics

Color Shift Free:



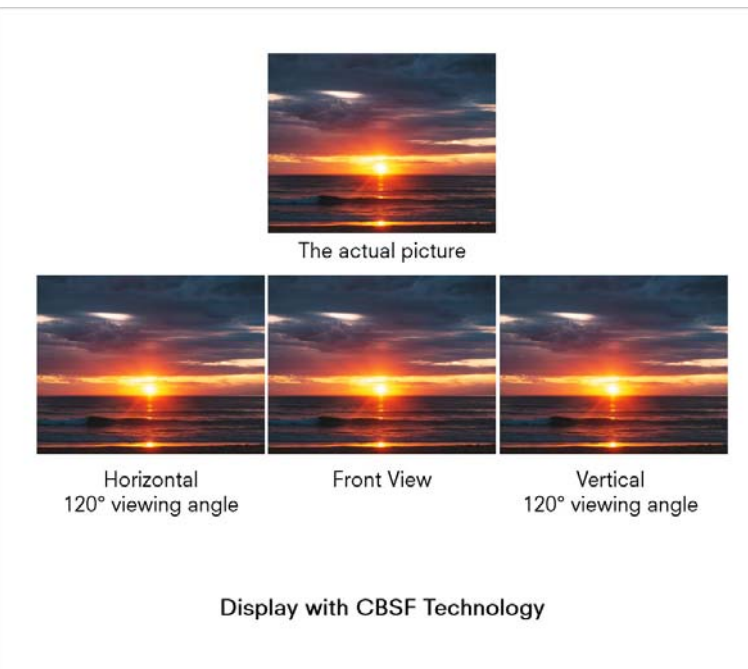
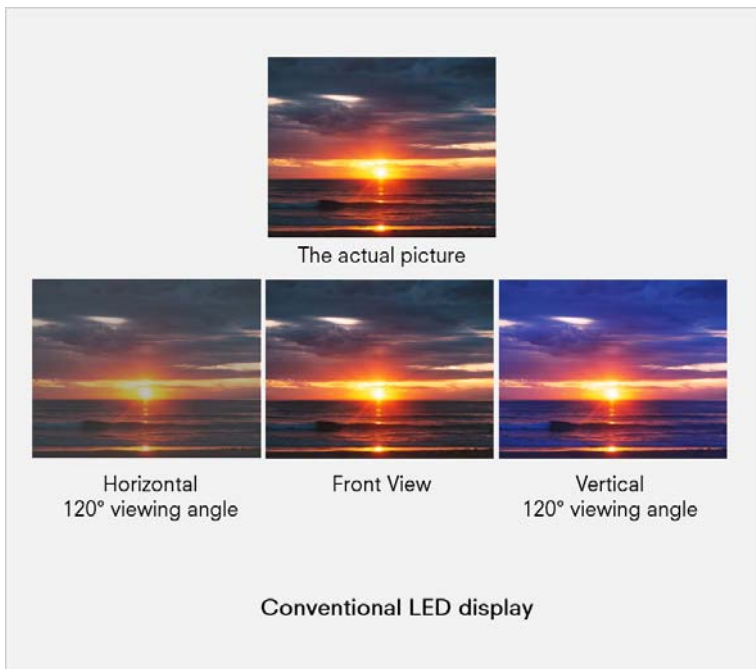
The conventional LED display (L)

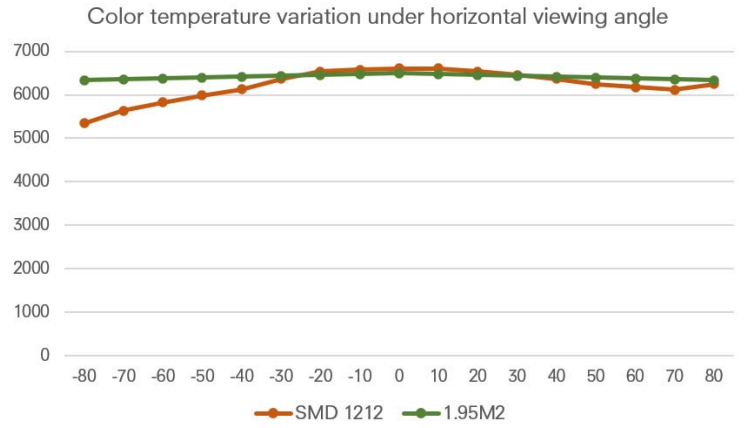
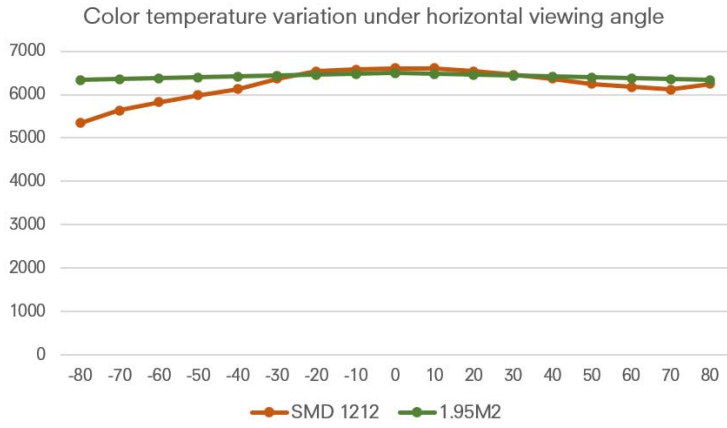


The display with CBSF technology integrated (R)

The common layout of SMD RGB chips often results in a blueish or reddish hue when viewed from a wide angle. However, CBSF technology resolves this issue by harmonizing the RGB among all pixels and between adjacent pixels,

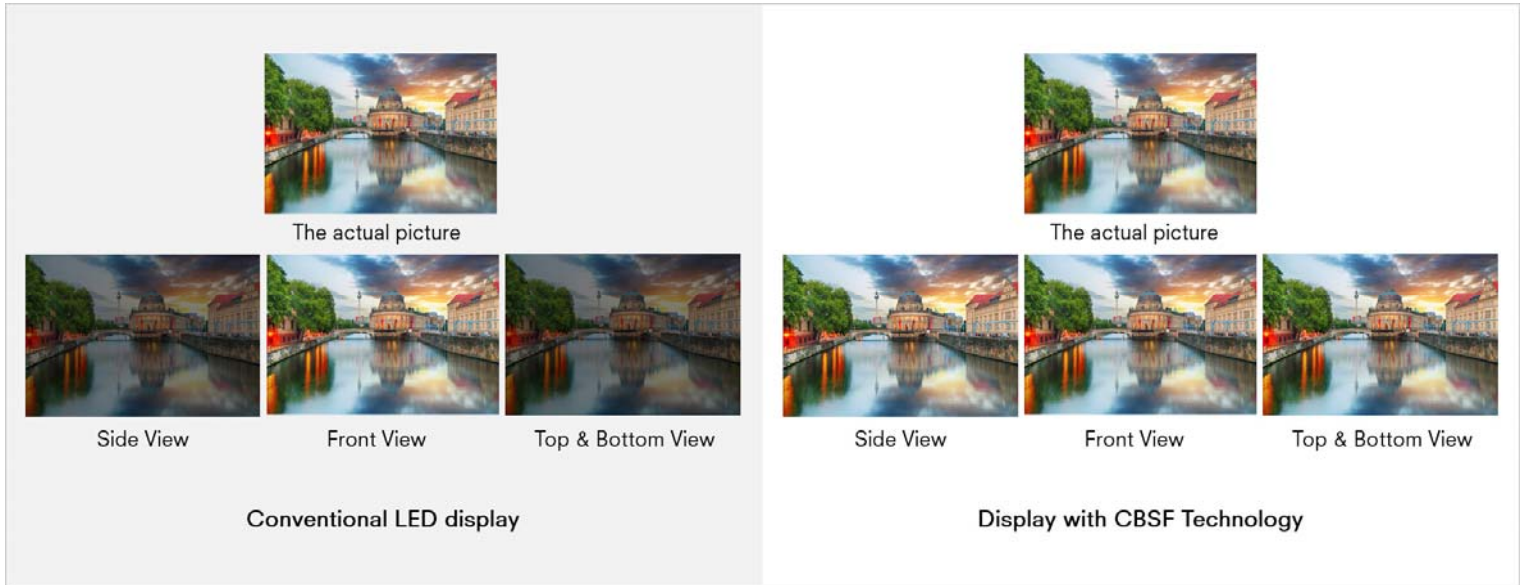
resulting in consistent and stable color temperature across a wide 160 degree viewing angle. CBSF technology ensures color shift free display, allowing vibrant and accurate colors to be presented in all conditions.





In the 160 degrees horizontal and vertical viewing angle range, 1.95M2 maintains a more consistent color temperature than conventional products

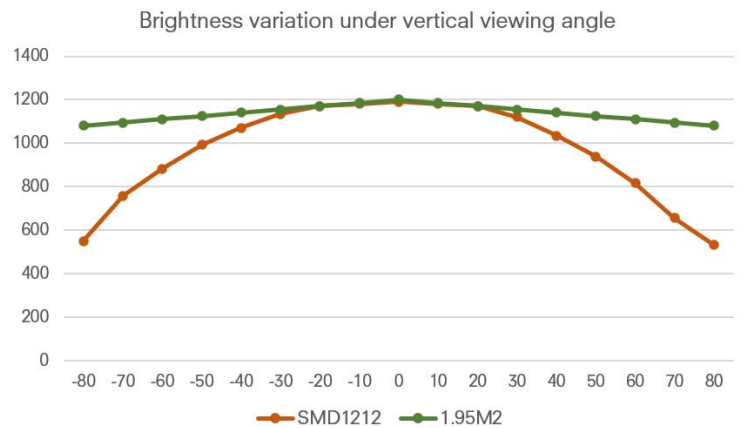
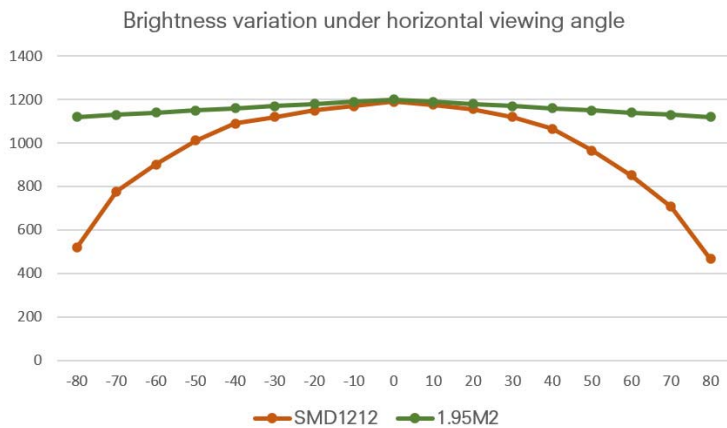
Brightness Stability:



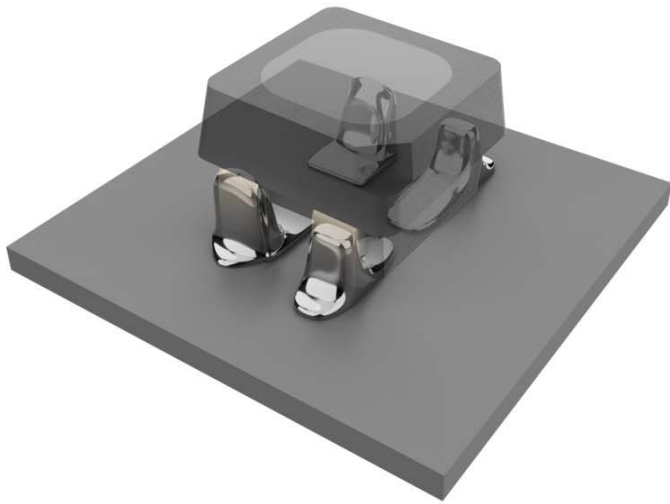
When deviating from the optimal viewing angle, the image may appear darker, while CBSF technology solves

the problem of inconsistent brightness under different filming angles and greatly reduces the work for repeated

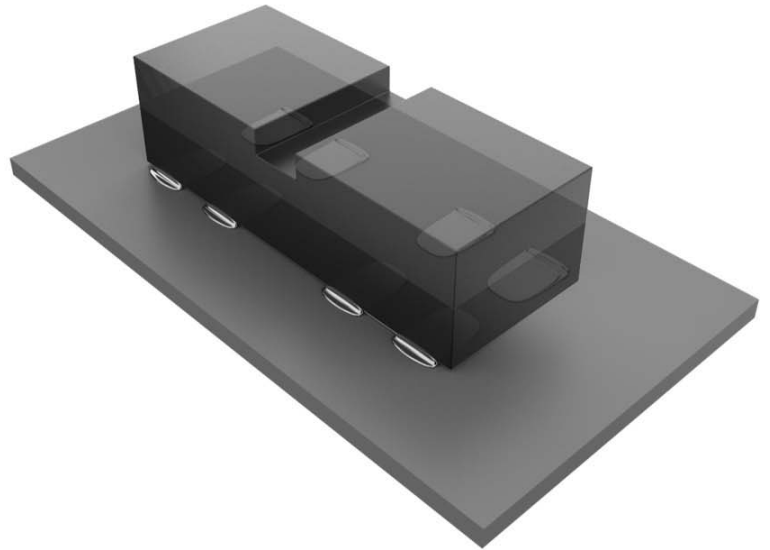
adjustments to brightness during the recording process.



In the 160 degrees horizontal and vertical viewing angle range, 1.95M2 maintains a more consistent color brightness than conventional products



4-pin design



8-pin design

High Contrast and Anti-glare:

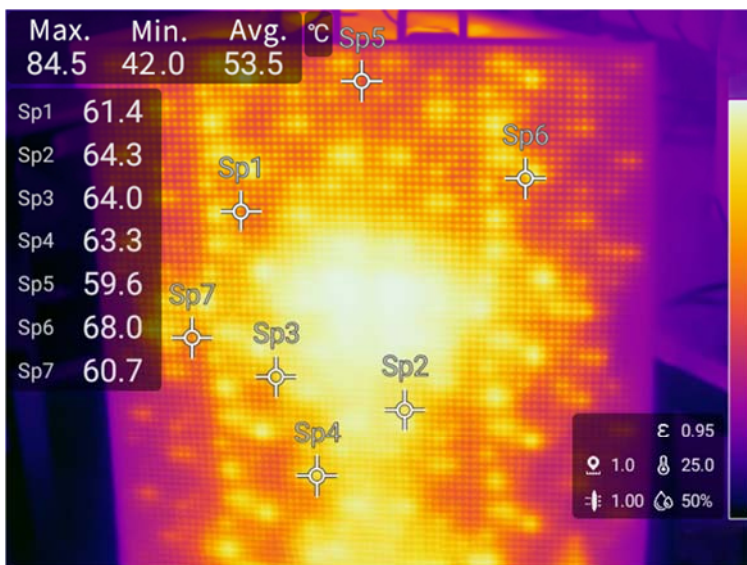
To achieve better anti-glare performance, M2 utilizes a special surface treatment process for the LEDs. This effectively addresses concerns of inconsistent LED surface reflection and coloring, thereby producing a more uniform and softer display. It greatly reduces the mirror reflection effect of the light-emitting surface, resulting in the best visual effect for virtual production applications.

Soldering Stability:

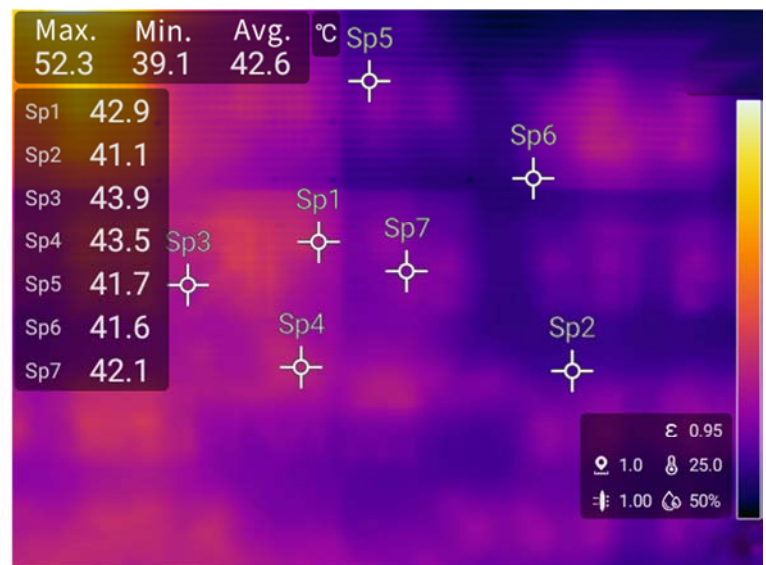
To improve the durability and stability of the LEDs, M2 uses a chip-type package with double the number of pins compared to conventional LEDs. The incorporation of an 8-pin design and an increased soldering area by 2.5 times strengthens the shearing force by four times, significantly improving the LEDs' stability and shielding them against external chemical contamination.

Cold LED Design:

It is noteworthy that CBSF technology has achieved a significant milestone in energy-saving performance. By implementing the Cold LED technology, it has demonstrated a remarkable reduction of 30% in power consumption and a significant reduction in screen temperature compared to conventional products, all while maintaining an equivalent level of brightness.



Graphic (1): Temperature of conventional LED screen



Graphic (2): Temperature of Cold LED screen



Click this link for more information at www.infiled.com or email info@infiled.com

Martin Professional MAC One

Creative BeamWash Moving Head with Fresnel Lens

HARMAN Professional Solutions, the global leader in audio, video, lighting and control systems, today announced the launch of the Martin MAC One, its revolutionary new Beam, Wash and Eye-Candy fixture, featuring a captivating Fresnel lens that transforms any stage or event into an extraordinary visual spectacle.

MAC One excels in three powerful feature areas. First, its narrow, high-intensity beam packs the same punch as larger, heavier fixtures to enable robust and vibrant aerial effects. Its stunning Fresnel lens creates a soft wash with a wide 4 to 27-degree zoom range, delivering seamless transitions and engaging visual effects. Rounding out the robust feature-set is an innovative backlight system with 24 RGB effect LEDs within the lens to guarantee memorable and show-stopping visual experiences.

With an impressive output of 2,400 lm and a narrow beam intensity of 300,000 cd, MAC One's performance is unparalleled in its category. Powered by a custom-developed 120 W RGBL (Red, Green, Blue, Lime) LED engine, it ensures higher light quality (CRI, TM-30, TLCI) than traditional RGBW fixtures, appealing to discerning lighting designers.

MAC One stands out against competing fixtures by delivering an innovative combination of features in an incredibly compact and low-weight form-factor. The fixture is easy to handle and manage, opening up a world of creative possibilities for lighting designers and users. More fixtures can be used in a show without compromising weight or space limitations, resulting in lower transport costs and a significant return on investment for rental companies.

Whether you are a lighting designer, rental company, or event organizer, MAC One is the answer for creating big looks with many fixtures, utilizing a

compact fixture for tight spaces or enthralling the stage with captivating eye-candy effects. Transcend expectations, empower creative expression and revolutionize the stage with MAC One.

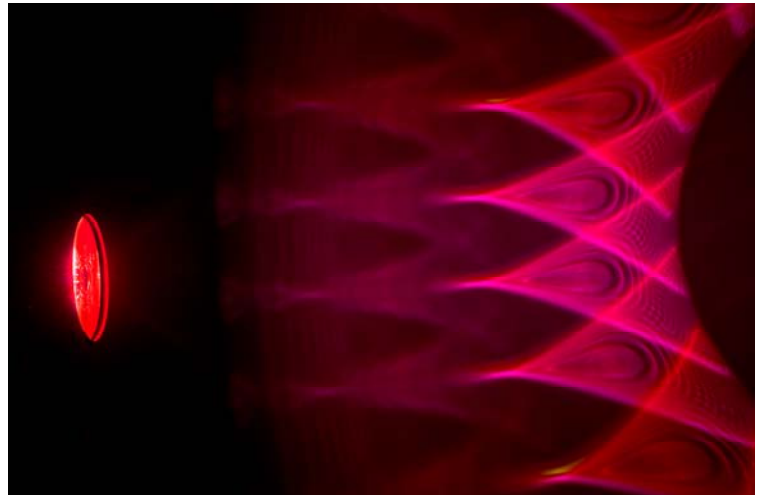
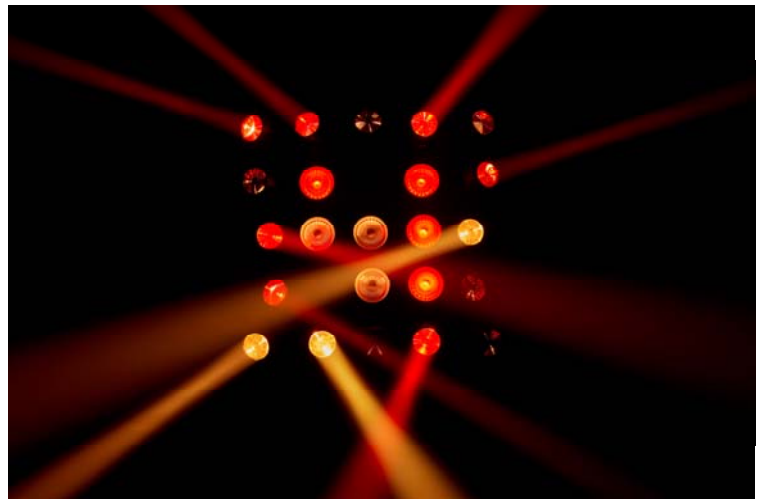
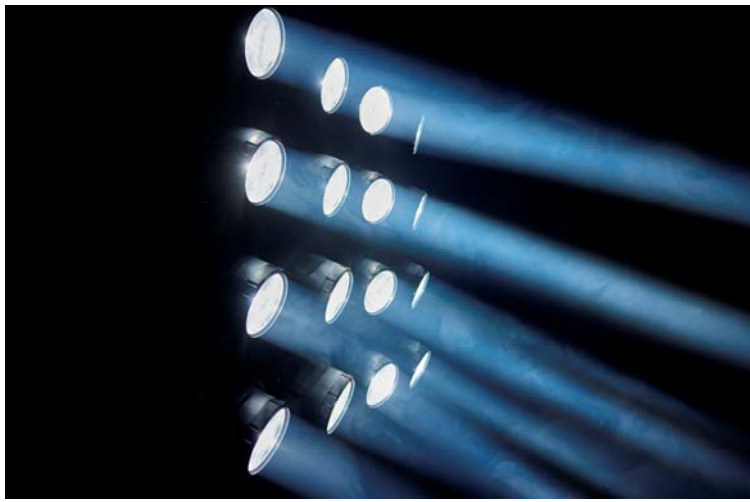
"We can't wait for LDs and users to experience MAC One for themselves. To say it's like nothing else out there, really is an understatement as it packs so much creative potential into such a compact package," said Wouter Verlinden, Martin Product Manager, Creative LED, Lighting, and Control. "Our goal was to combine a nice punchy beam with that classic throwback Fresnel lens and then once we added

the RGB effect LEDs, it really has become a fixture that can do so many things in so many different applications. We look forward to everyone getting to experience it in person."

A Punch Above + Well Defined Intensity

With 2,400 lm output from a form factor just above 4kg, MAC One features great output to size ratio, delivering impressive light output from a compact and lightweight fixture. Additionally, MAC One's narrow beam intensity of 300,000 cd ensures a well-defined, tight, fast, and responsive mid-air beam.





High Quality Light Output + Beaming Brilliance

Martin’s custom-designed 120 W RGBL (Red, Green, Blue, Lime) LED engine with higher CRI / TM-30 / TLCI offers better rendering of people and costumes for demanding broadcast and

theater applications. With a 4 to 27 degree zoom, MAC One can deliver a tight, fast, and well-defined beam, but also a soft-edged wash with its championed Fresnel lens, often loved by lighting designers.

Beautiful to Look At, Beautiful to Light Up

MAC One offers precision control for the most demanding applications in broadcast and theatre and the ability to remove unwanted flicker in broadcast applications. It also offers beautiful eye-candy, empowering it to decorate the stage when the fixture is not being used as a beam or wash.

Extremely Compact Size

Weighing just 4.4 kg / 9.7 lbs, MAC One is easy to deploy in large quantities and reduces shipping costs and environmental impact. It’s also perfect for venues with load-bearing limits or space-constraints.

Accessory Adaptations

With the optional fourbar accessory, MAC One fixtures can be transported, rigged, unrigged, and cabled in blocks of four, saving time when deploying several fixtures. An optional grid mount adapter enables the fixtures to be rigged in (self-supported) lines and matrices for creation of a “wall of light” without needing a custom rigging structure. Lines and matrices can contain a mix of MAC One and VDO Atomic Bold and Dot fixtures.

Connection is Key

Control the fixtures with a mix of Video and DMX using DMX, Art-Net, sACN and P3 connections. With P3 Control you can easily reduce the needed DMX channels / console parameters and make the most of the easy setup, mapping and addressing via the Martin P3 System Controller. Video can be mapped onto Beam, Aura or both.



Click this link for more information at <https://martin.com/products/mac-one>

NEXO ePS Outdoor Loudspeakers bring great sound to the great outdoors



Built on the platform of NEXO's industry-standard PS Series point source loudspeakers, the ePS Series has quickly gained an enviable reputation as a 'no frills', install-only range that makes acclaimed NEXO performance accessible to a wider range of projects.

Now comes ePS Outdoor, a range of four weatherproof loudspeakers engineered and tested for use in outdoor installations.

ePS6-EN54, ePS8-EN54, ePS10-EN54 and ePS12-EN-54 loudspeakers partner high-excursion 6, 8, 10 and 12-inch LF drivers respectively with a 1.4" diaphragm HF driver (ePS12/1.7") in 15mm Baltic birch cabinets protected by a high-grade polyurethane coating. The IP55-rated loudspeakers deliver a clean and tight low-end response, and their asymmetrical horns can be rotated to ensure optimum directivity for every installation.

Exceeding the requirements of EN54-24 certification, ePS Outdoor loudspeakers have been further developed and tested to ensure consistent performance and long product life, even in the most severe conditions.

From the use of high-grade A4 stainless-steel screws to UV-protected front cloth and polyurethane coatings, every detail has been considered and the final designs have been subjected to 800 hours of salt spray testing (ISO 9227 standard) and 600 hours UV testing (DIN 75220 standard). Connections on the rear panel are made through two (in/out) pairs of terminal blocks with an IP cover for moisture protection.

A small, but flexible, range of mounting accessories is available. Cabinets feature two M6 with 80mm pitch and one M10 fittings on the sides for mounting to a U Bracket, bumper or eye bolts. The back of each speaker is fitted with 3x M6 with 70mm pitch fittings for wall-mount in both horizontal and vertical positions. NEXO's



NXAMPmk2 powered controllers include pre-sets for ePS Outdoor and all NEXO speakers, making it easy to include the EN54-rated speakers as the outdoor components of a larger installation that includes other NEXO loudspeakers inside the venue.

Speaking at the launch, NEXO Sales and Marketing Director Gareth Collyer says: "From cruise ships and theme parks to beach bars and restaurant terraces, ePS Outdoor offers system designers a cost-effective, weatherproof loudspeaker solution with trademark NEXO performance and durability."



Click this link for more information at www.nexo-sa.com

Vision Without Limits: Experience YES TECH New Products

The MG9 Series has a cabinet size 500*500 and pitch covers 2.9 to 5.9, which can cover 100% indoor and outdoor rental applications, also for floor tiles.

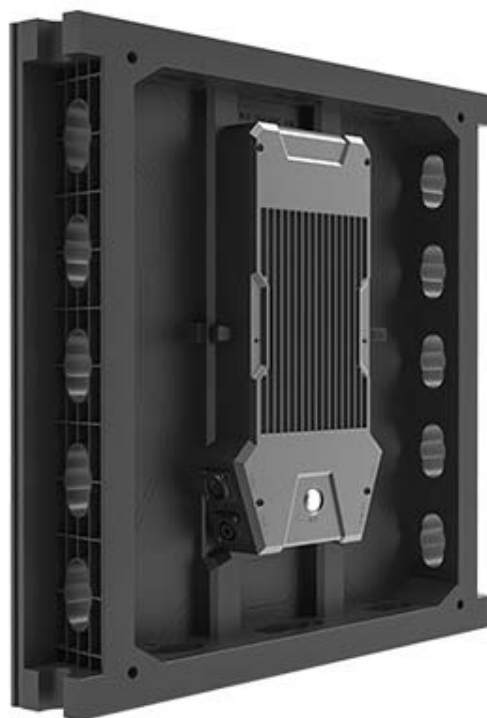
MG9 Series enhanced structural design, with improvements in both load-bearing capacity and tensile strength. The power bottom adopts a thickened design, improving the load-bearing capacity and durability when applied on floor tiles.

It is more reliable and stable. The cabinet corners are reinforced with "edge-lock" protection design (only for P2.9). Adopting the linear secondary adhesive process, the LED's thrust increased and edge distance optimized. These upgrades can reduce the collision and loss of LEDs in maintenance. Moreover, it also extends the lifespan of the entire equipment and brings more business value to customers.

The MG9 Series is a universal choice for its outstanding technology and reliability. Whether it is a stage performance, sports competition or other event, venues can rely on it to show exciting content and bring shock and enjoyment to the audience.

YES TECH's latest outdoor fixed product-- Mview Series has a cabinet size of 960 x 960 with pixel pitch ranges from 3.3-10. We highly recommend the P3.3, which is the first choice of outdoor high-definition advertisement. It can enhance visual clarity and improve resolution for closer viewing distance, delivering an immersive experience.

Mview Series adopts aviation aluminum material combined with die-cast aluminum design, resulting in a thin and light full metal cabinet. Each cabinet weighs only 22.8kg and is only 72.5mm thickness, which is lighter than the traditional outdoor screen. In terms of heat dissipation performance, the



control box cover is designed with aluminum heat sinks, making uniform heat dissipation.

Furthermore, Mview supports 90° straight/curved corner splicing, allowing for more creative shapes, such as square columns and arc-shaped columns. Mview has a triple waterproof design with an IP65 protection rating, providing more reliable operation and guarantees reliable performance regardless of external circumstances.

In terms of display effects, its 10,000 brightness levels, combined with a high refresh rate and high contrast, ensure optimal visibility even in direct sunlight or other challenging lighting conditions.



These two new products highlight YES TECH's dedication to providing creative solutions that enrich the LED display experience.

YES TECH will remain steadfast in our commitment to the LED display industry, dive into the LED display to promote the innovative development of technology and products together with global partners in the future.



Click this link for more information at www.yes-led.com



ROE Vanish ST LED Panel

The Vanish ST Series upholds ROE Visual's commitment to industry-leading mechanics and build quality standards, solidifying its reputation as a trusted name in the LED display industry. Engineered with precision, the VST Series offers stable and reliable performance, making them perfectly suited to withstand the challenges of outdoor applications and guarantee maximum uptime for live events and other demanding applications. The VST Series is available in a solid panel, measuring 1000x1000mm, and comes in pixel pitches of 4mm (V4ST) and 6mm (V6ST), providing the exceptional brightness necessary for outdoor use, ensuring that your visuals capture attention in any environment. The Vanish ST has built-in curving blocks, allowing the frame to curve 10 degrees in a convex or concave configuration. The Vanish ST Series is designed to provide exceptional value for your touring, festival and outdoor live events needs. Its innovative engineering and cost-effective pricing make it an ideal and dependable choice for event organizers, AV rental companies, and production professionals who seek a high-quality LED panel with a great return on investment.

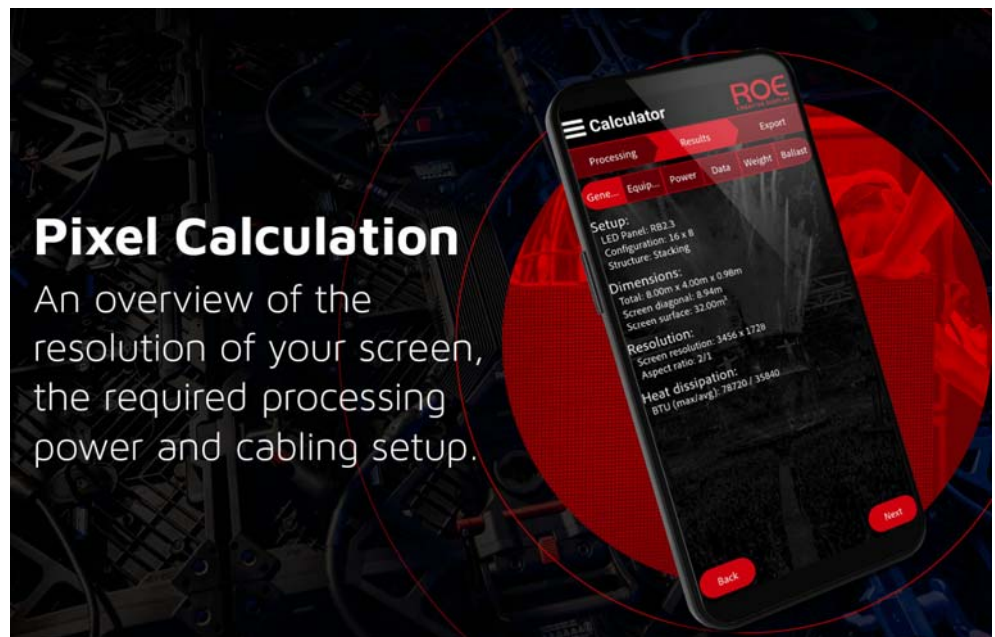


roevisual.com

ROE Calculator App



ROE Visual is proud to announce the release of its groundbreaking ROE Calculator APP. This cutting-edge application is a complete upgrade of the previous ballast calculator and has added many new and exciting options to create essential technical calculations for your LED screens. With a comprehensive suite of tools that include ballast calculation, pixel and resolution calculation, power requirement analysis, and much more, the ROE Calculator APP will become the ultimate tool for LED technicians, whether on-site or in the preparation stages of a production. The ROE Calculator APP is a game-changer for LED technicians and professionals, offering an all-in-one solution for tackling complex calculations with ease and precision. The ROE Calculator APP is cleverly connected to the ROE Visual website. Combining all product data and specifications into one platform, the ROE Calculator APP is always up-to-date with the latest specifications and product releases. To make it easily accessible, you only require one login for our website and the APP.



roevisual.com

CLF Poseidon Beam Ultra



The CLF Poseidon Beam Ultra is a cutting-edge member of the Poseidon IP65 rated family of lighting fixtures designed for outdoor use. Based on the known Aorun, the Poseidon Beam Ultra has an exceptional performance and durability what stands out as the fastest and most powerful outdoor beam in its class. With its IP65 rating, it's well-protected against both moisture and dirt, making it an ideal choice for a wide range of outdoor applications that demand superior beam effects. Its feature set is both fast and precise, offering a range of capabilities that enhance its versatility. Some key features are CMY mixing, double prism wheel with a unique PRISM shake function, 200 mm lens and 1.6° lens optics. One of the standout features of the Poseidon Beam Ultra is its elegantly designed, lightweight housing, which is not only visually appealing but also highly functional. Special motors embedded within the housing facilitate exceptionally fast and precise pan and tilt movements, allowing for intricate and engaging lighting displays. To facilitate user interaction, the Poseidon Beam Ultra is equipped with a bright LCD display that provides convenient access to on-board settings and is offline programmable.

clf-lighting.com



TouchDesigner supports direct output to ShowNET laser mainboards

The well-known real-time interactive multimedia content and mapping software tool TouchDesigner implemented the direct laser output support through the popular ShowNET laser mainboard. The ShowNET laser mainboard is a standard mainboard in many laser systems nowadays, so it is widely available with several tens of thousands of interfaces in the market. TouchDesigner is a node-based development platform for media, that can transform and modify content of different sources and then output to the same or other media. It allows to “convert anything into anything”, which makes it a very useful tool for mapping applications, combining of media and general control of multiple media. So it definitely made sense to enhance the media compatibility with the direct connectivity to the versatile ShowNET laser mainboard. The connection of TouchDesigner to a laser with ShowNET mainboard (or an external ShowNET interface) is very simple: A standard LAN infrastructure, even a direct LAN cable between the computer and the laser, is totally sufficient. It is not required to buy additional licenses or extra hardware components. It is just a straight forward connection. TouchDesigner then automatically detects the ShowNETs that are available in the network and makes them selectable in the software as output devices. Up to 40 ShowNET mainboards can be handled in one physical network, but many more are available in TouchDesigner if multiple physical LANs or V-LANs are connected. TouchDesigner is a software product developed by the Canadian company Derivative.



laserworld.com/en/shownet-compatible/touchdesigner



Elation PROTEUS ODEON™

The PROTEUS ODEON™ is a powerful yet compact IP66-rated LED profile fixture offering outstanding projection and beam qualities in any environment. Providing up to 30800 lumens output from its custom-designed Variable CRI LED engine, the PROTEUS ODEON is the ideal fixture for any outdoor or indoor application requiring superior output, bright and powerful beams, and quiet operation, as well as stunningly precise gobos and colors. The TruTone variable CRI allows selecting the best blend of light output and color accuracy, depending on the requirement of the show or scene. It is seamlessly adjustable from CRI 70 to CRI 93. PROTEUS ODEON provides the designer a comprehensive FX package with 13 rotating and 7 fixed glass gobos, full animation wheel, overlapping dual prisms, dual frost and a high-speed iris. Its indexable framing system allows full-blackout shutter cuts for precise beam shape control. With a fast zoom range from 5.5° to 50° out of an impressively compact fixture design, the PROTEUS ODEON has the power to cut through and make a statement on any stage. Fully sealed from dust and water, it is a rugged fixture for a wide variety of applications.

elationlighting.com



ROE Calculator App



The FUZE TEATRO™ is a silent fanless full spectrum automated LED framing fixture designed for theater, television and a wide array of other precision lighting applications. The 92 CRI engine utilizes an 480W 5-color homogenized LED array consisting of Red, Green, Blue, Mint, and Amber sources. The carefully tuned LEDs ensure accurate color reproduction and dynamic whites while delivering a powerful output of up to 15,000 lumens. Virtual color temperature, Magenta / Green adjustment plus CMY or RGB emulation provide the designer with immediate access to the impressive LED color array. The FUZE TEATRO is designed for any application where a silent fully automated framing fixture with outstanding and compelling color range and quality is required. The fixtures enhanced optical design and lens coatings ensure precise and razor-sharp projections, removing all unwanted color shifting and aberrations in all zoom, focus, or framing positions. Dual rotating gobo wheels, animation wheel, dual frost, prism and iris round out its comprehensive feature set in this quiet and extremely powerful automated framing fixture.

elationlighting.com

ADJ Focus Flex L19



Building on the success of the popular Focus Flex L7, ADJ is proud to announce the immediate availability of its new Focus Flex L19. Featuring the same lime-infused, high CRI, color mixing LEDs as its compact sibling, this larger version packs in almost three times the quantity to allow for intense output and complex pixel-mapped effects. This professional moving head luminaire offers fast movement as well as an impressive zoom range, allowing it to generate both intense columns of light and wide washes of color. The Focus Flex L19 feature nineteen high output 40-Watt RGBL (red, green, blue & lime) color mixing LEDs. These are arranged in three concentric circles across the face of the fixture and can be controlled independently to allow for the creation of 'eye candy' animation patterns as well as for pixel-mapped playback of low-resolution video content. The inclusion of the lime LED chip allows for an enhanced color palette as well as an improved CRI (Color Rendering Index) of 84.2 (zoomed out, full on). All LEDs used to manufacture the fixture are meticulously calibrated in the factory to ensure perfect consistency between units, even if they come from different batches.



adj.com



Eliminator Lighting Mega Hex L Par

Offering powerful output, lime-infused LEDs, a patented 'sit-flat' design, a multi-purpose scissor yoke, DMX or IR remote control, and an optional frost filter, Eliminator Lighting's new Mega Hex L Par is a next generation LED par which won't break the bank. This versatile fixture is ideal for a wide variety of lighting applications from uplighting walls to illuminating stages, highlighting décor elements to getting the party started on the dance floor. With a light weight and flexible design, it is equally suited to use by event companies and mobile entertainers as it is for permanent installation in bars, clubs, and other leisure venues. Powered by four extremely bright 20-Watt HEX (6-in-1) color mixing LEDs, the compact Mega HEX L Par offers impressive output in a wide variety of colors. Each LED combines red, green, blue, lime, amber and UV elements, each with independent 0-100% dimming control, allowing for a huge spectrum of colors to be mixed. Inclusion of the UV element allows for the 'black light' effect which causes white and neon colored décor and clothing to glow when used alone, and it can also be combined with other elements to create vibrant colors like hot pink, deep purple, and electric blue.



adj.com



Cameo LEYA 3000 RGB

Ignite your events with the **LEYA RGB** Diode Lasers. From DJ sets to vibrant parties, these laser light projectors redefine entertainment. With power options of 2,000 mW or 3,000 mW, an all-diode system, and precise beams with minimal divergence, your projections will dazzle. The 25 Kpps galvo scanner, scan fail safety system, and emergency stop ensure seamless shows. Let the LEYA series elevate your gatherings into unforgettable spectacles.

FEATURES

- RGB 3000 mW total output power (R: 600 mW, G: 800 mW, B: 1600 mW)
- Dust-proof aluminium housing for minimum maintenance
- Scan-fail safety system, interlock emergency stop signal
- 25 Kpps galvo scanner at 8° ILDA
- Control via ILDA
- Analogue modulation for up to 16 million colour shades
- Precise beam with extremely low divergence for razor-sharp projections
- Neutrik PowerCON power input and output



cameolight.com

GLP JDC2 IP



GLP JDC2 IP is the new innovative hybrid strobe with more visibility, increased output and advanced creativity. The new integrated beam line is equipped with 84 high-performance LEDs which are highly efficient at 10 W each and produce a flash that is more powerful than ever. The optimized, extremely steep flash ramps ensure an even more realistic and intense strobe impression. With 12 individually controllable segments, the beam line offers extended intensity flash effects and more than 100 static and dynamic strobe patterns. With 1,025 cm² (159 in²) luminous surface, not only does the visual solid angle increase, but the visibility of the surface is perceived as larger and up to 25% brighter. The saturated colors and exceptional brightness of the 1,728 LEDs provide powerful diffuse lighting. This allows stages and spaces to be completely immersed in color. An impressive, rich color environment is created, especially when combined with haze. The specialized black LED masking ensures a black front appearance, while eliminating reflection from other light sources.



glp.de

Elation KL CYC™

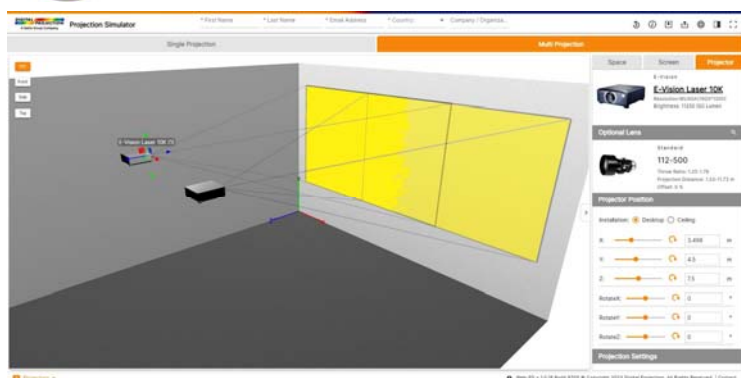


Introducing Elation's KL CYC™, an expressive LED cyc light and footlight fixture meticulously crafted for the discerning lighting designer. Harmonizing artistic expression with cutting-edge technology, the KL CYC seamlessly transforms any space into a creative canvas for dynamic storytelling. Tailored for smooth and evenly illuminated cycloramas, sets, or wall washing applications, the KL CYC boasts an efficient asymmetrical reflector design to achieve perfect blends of diffused light, enhancing the overall aesthetics of the stage and covering significant heights with ease. With its stylized, low-profile housing, the KL CYC is also an ideal choice for footlight positions on the downstage edge, providing excellent versatility for stage, film, television, theme park and event lighting use. Highlight performers with dynamic low-level lighting or place it along any stage edge, even as runway lighting, to define its boundary and create a well-defined performance area. Built of a robust yet lightweight construction, the KL CYC comes in one-meter (KL CYC L™) and half-meter (KL CYC S™) models for seamless integration into any lighting design.

elationlighting.com



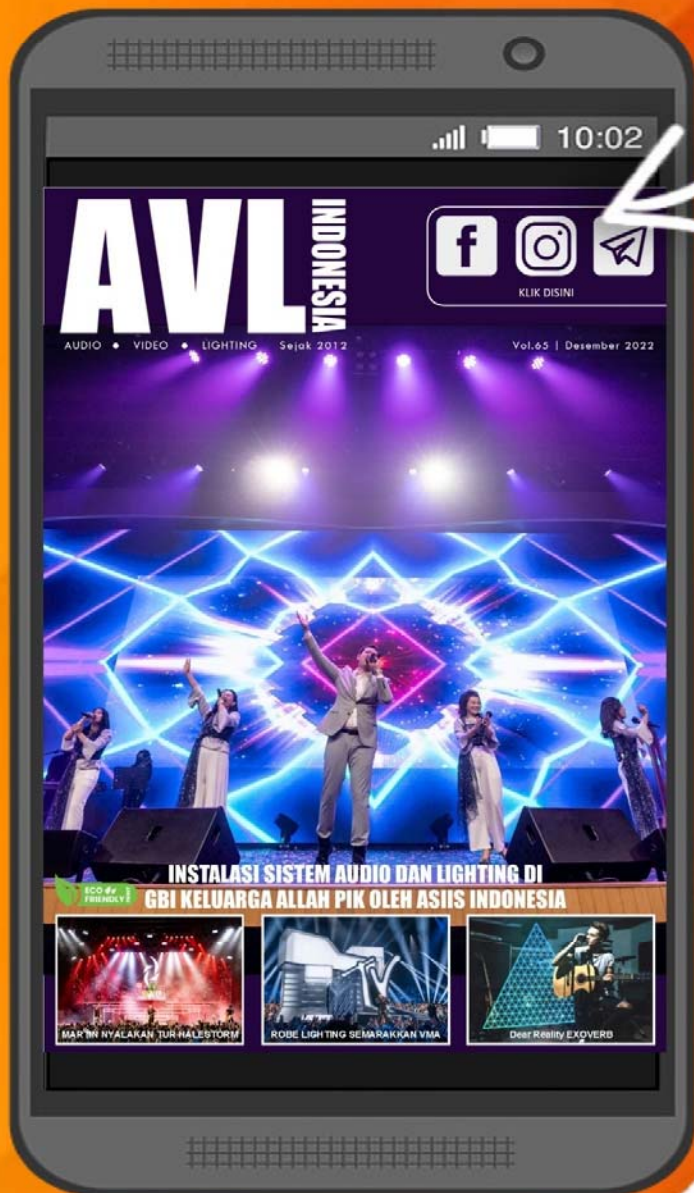
Digital Projection Projector Simulator



Digital Projection has released Projection Simulator, a new and improved Projection Simulator, which is a free web-based application which helps users choose a suitable projector for their unique install needs. Projection Simulator offers a comprehensive suite of features, including calculating throw distances between screens and projectors, as well as determining the relationships between the size and distance of the projected image. The tool also provides recommendations for optimal projector placement. With the user's convenience in mind, the software offers two modes: Single Projection and Multi Projection. In Single Projection mode, one projector is available, in Multi Projection mode, users can import, select and arrange 3D objects, such as domes and curved screens, and map onto them, helping users to pre-install projectors simulated in an install scenario. The application also assists those unsure of their projector requirements, suggesting projectors that align with the user's needs, and displaying the basic specifications of the product, such as resolution and brightness, as well as a photo. However, if users know what type of projector they need, the tool will show a list of projectors by projector type.

digitalprojection.com

Majalah Digital AVL TIMES INDONESIA
Unduh gratis dari
www.avltimes.com/avl-indonesia



AVL TIMES VIỆT NAM
PHIÊN BẢN KỸ THUẬT SỐ MIỄN PHÍ
TẠI ĐƯỜNG DẪN NÀY
www.avltimes.com/avl-vietnam